

Using Braindumo2go New Updated Microsoft 70-688 Practice Exam Questions - Getting Microsoft 70-688 Certification(141-150)

QUESTION 141 Drag and Drop Question Your network contains Windows RT client computers. All certificates are issued by an internal certification authority (CA). All of the computers are managed by using Windows Intune. You have a Windows 8.1 client computer named Client1 and a Windows RT client computer named Client2. On Client1, you develop a Windows Store app named Appl. You need to recommend the tasks that must be completed to ensure that Client2 can install Appl. What should you recommend? (To answer, drag the appropriate tasks to the correct location or locations. Each task may be used once, more than once, or not at all. You may need to drag the split bar between panes or scroll to view content.)

The screenshot shows a 'Tasks' pane on the left with four items: 'Sign the application.', 'Install a sideloading key.', 'Upload the code signing certificate.', and 'Specify an enrollment server address.'. On the right is an 'Answer Area' with a vertical list of client names: 'Client1:', 'Client2:', and 'Windows Intune:'. A watermark 'Braindump2go.com' is visible across the interface.

Answer:

The answer key shows the 'Tasks' pane with all four tasks highlighted in green. The 'Answer Area' shows the following assignments: 'Client1: Sign the application.', 'Client2: Install a sideloading key.', and 'Windows Intune: Upload the code signing certificate.'. A watermark 'Braindump2go.com' is visible.

QUESTION 142 You have Windows 8.1 client computers. The computers use the Microsoft Application Virtualization (App-V) 5.0 client. You discover that when users sign in to their computer, the App-V client refreshes all of the published packages. You need to prevent the App-V client from refreshing the published packages at sign-in. The solution must ensure that the users can use App-V applications. Which Windows PowerShell cmdlet should you run? A. Set-AppvClientConfiguration B. Set-AppvClientMode C. Set-AppvClientPackage D. Set-AppvPublishingServer Answer: D

QUESTION 143 Your network contains an Active Directory domain. The domain contains Windows 8.1 Enterprise client computers. You need to recommend a solution to ensure that help desk users can replace corrupt operating system files. Which Microsoft Diagnostics and Recovery Toolset (DaRT) tool should you include in the recommendation? A. Standalone System Sweeper B. File Restore C. Disk Commander D. Computer Management E. SFC Scan Answer: E Explanation: http://en.wikipedia.org/wiki/Microsoft_Desktop_Optimization_Pack

QUESTION 144 You have Windows 8.1 Pro client computers. You need to recommend a solution to roll back the Windows Defender engine and the malware signature files on the computers. The solution must minimize administrative effort. What should you include in the recommendation? A. the Mpcmdrun command B. Windows 7 File Recovery C. the Refresh your PC push-button reset feature D. the Program and Features Control Panel item Answer: D

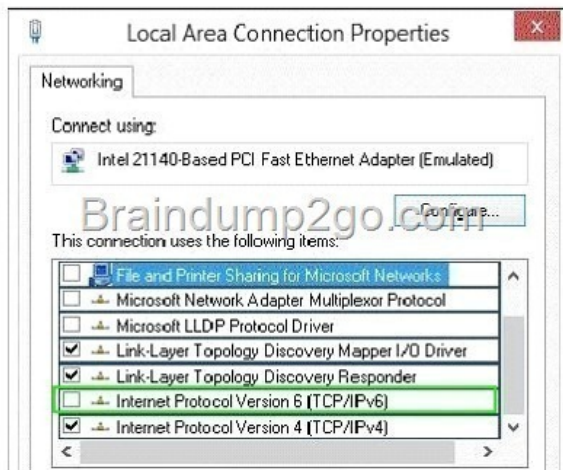
QUESTION 145 Your network contains a web server named testweb.contoso.com that is used for testing. You have a Windows 8.1 Pro laptop. After a network administrator changes the IP address of the web server, you discover that you can no longer connect to testweb.contoso.com. You need to resolve immediately the issue that prevents you from connecting to the server. Which command line tool should you run? A. Clear-DnsClientCache B. Set-DnsClientGlobalSetting C. Set-DnsClient D. Nbtstat Answer: C Explanation: <http://technet.microsoft.com/en-us/library/jj590776.aspx>

QUESTION 146 Hotspot Question Your network contains an Active Directory domain. DirectAccess was deployed recently. You have a Windows 8.1 Enterprise client computer named LON-CL1. You need to ensure that LON-CL1 can establish connections to the network by using DirectAccess. What should you configure? (To answer, select the appropriate item in the answer area.)

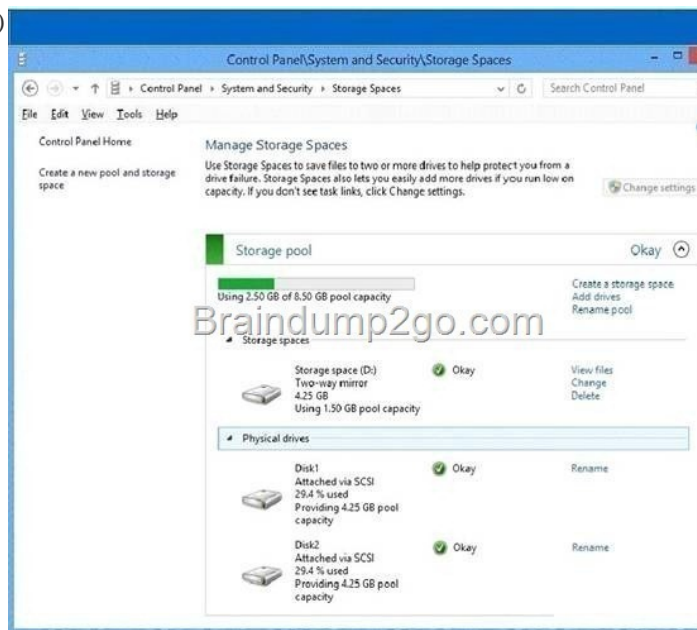
Answer Area



Answer: **Answer Area**



QUESTION 147 You have a Windows 8.1 Enterprise client computer named Computer1. The Storage Spaces settings of Computer1 are configured as shown in the following exhibit. (Click the Exhibit button.)



You plan to create a three-way mirror storage space in the storage pool and to set the size of the storage space to 50 GB. You need

to identify the minimum number of disks that must be added to the storage pool! for the planned mirror. How many disks should you identify? A. 1 B. 3 C. 4 D. 5 Answer: B Explanation:

<http://www.eightforums.com/tutorials/4203-storage-spaces-create-new-pool-storage-space-windows-8-a.html> QUESTION 148 Your company has a main office that has a connection to the Internet. The company has 100 Windows 8.1 Pro client computers that run Microsoft Office 2010. You purchase a subscription to Office 365 for each user. You download the Office Deployment Tool for Click-to-Run, You need to deploy Office 365 ProPlus to the computers. The solution must minimize the amount of traffic over the Internet connection. Which two actions should you perform? (Each correct answer presents part of the solution. Choose two.) A. On a file server, run setup.exe and specify the /download parameter. B. On each client computer, run setup.exe and specify the /configure parameter. C. On a file server, run setup.exe and specify the /configure parameter. D. On each client computer, run setup.exe and specify the /download parameter, Answer: CD QUESTION 149 Drag and Drop Question Your company is migrating from Windows 7 to Windows 8.1. Before you attempt to migrate a client computer named Computer1, Computer1 fails and can no longer start Windows 7. You need to migrate the user profile from Computer1 to a client computer named Computer2 that runs Windows 8.1. Which three actions should you perform in sequence? (To answer, move the appropriate three actions from the list of actions to the answer area and arrange them in the correct order.)

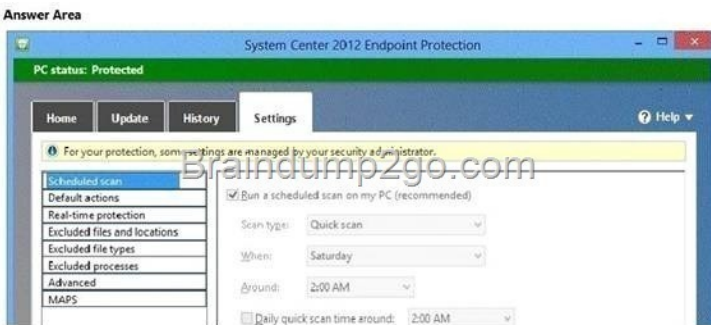
Actions	Answer Area
On Computer2, run loadstate.exe.	
On Computer1, run scanstate.exe.	
On Computer2, start Windows Preinstallation Environment (Windows PE).	
On Computer1, start Windows Preinstallation Environment (Windows PE).	
On Computer1, run loadstate.exe.	
On Computer2, run scanstate.exe.	

Answer:

Actions	Answer Area
On Computer2, run loadstate.exe.	On Computer2, run loadstate.exe.
On Computer1, run scanstate.exe.	On Computer1, run scanstate.exe.
On Computer2, start Windows Preinstallation Environment (Windows PE).	On Computer2, start Windows Preinstallation Environment (Windows PE).
On Computer1, start Windows Preinstallation Environment (Windows PE).	
On Computer1, run loadstate.exe.	
On Computer2, run scanstate.exe.	

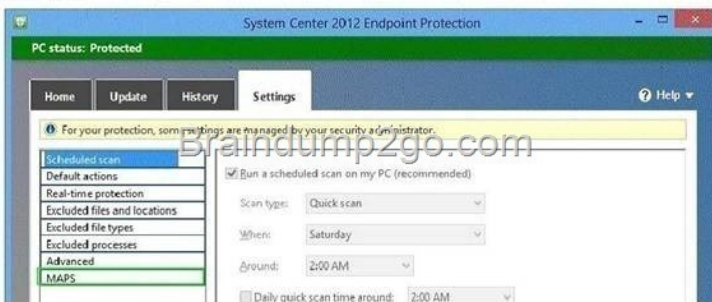
QUESTION 150 Hotspot Question You have Windows 8.1 Enterprise client computers. All of the computers are managed by using Microsoft System Center 2012 Configuration Manager. You enable Microsoft System Center 2012 Endpoint Protection on the computers. You need to ensure that Endpoint Protection automatically downloads the latest available malware definition updates when unidentified malware is detected on the computers, What should you configure? (To answer, select the appropriate option in the answer area.)

Answer Area



Answer:

Answer Area



] Passing Microsoft 70-688 Exam successfully in a short time! Just using Braindump2go's Latest Microsoft 70-688 Dump
<http://www.braindump2go.com/70-688.html>