

Try Braindump2go Latest Microsoft 70-642 Dumps Questions And 100% Pass Exam Microsoft At The First Try (321-330)

Braindump2go Guarantees Your Microsoft 70-642 Exam 100% Success with Our Unique Official 70-642 Exam Questions Resources! Braindump2go's 70-642 Braindumps are Developed by Experiences IT Certifications Professionals Working in Today's Prospering Companies and Data Centers! Braindump2go 70-642 Exam Dumps are Checked by Our Experts Team every day to ensure you have the Latest Updated Exam Dumps! Vendor: Microsoft Exam Code: 70-642 Exam Name: TS: Windows Server 2008 Network Infrastructure, Configuring Keywords: 70-642 Exam Dumps,70-642 Practice Tests,70-642 Practice Exams,70-642 Exam Questions,70-642 Dumps,70-642 PDF,70-642 VCE,70-642 Study Guide

Compared Before Buying Microsoft 70-642 PDF & VCE!

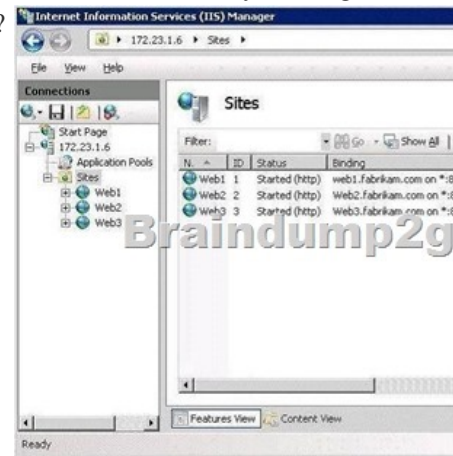
Pass4sure	Braindump2go	TestKing
Not In Stock	100% Pass OR Money Back	199 Q&As – Practic
/	448 Q&As – Real Questions	\$189.98
/	\$99.99	No Discount
/	Coupon Code: BDNT2014	

QUESTION 321 Your network contains a DNS zone for contoso.com. All servers register their host names in DNS by using dynamic updates. The network contains a server named Server1.contoso.com. From a computer named Computer1 that runs Windows 7, you successfully resolve Server1.contoso.com to an IP address. You change the IP address of Server1.contoso.com. From Computer1, you discover that server1.contoso.com still resolves to the old IP address. You successfully connect to server1.contoso.com by using the new IP address. You need to ensure that you can immediately resolve Server1.contoso.com to the new IP address. What should you do on Computer1? A. Run ipconfig.exe and specify the /flushdns parameter. B. Run netsh.exe and specify the dnsclient context. C. Restart the Peer Name Resolution Protocol (PNRP) service. D. Run dnscacheuvc.exe. Answer: A Explanation: ipconfig/flushdns - Flushes and resets the contents of the DNS client resolver cache. During DNS troubleshooting, you can use this procedure to discard negative cache entries from the cache, as well as any other entries that have been added dynamically.

<http://www.microsoft.com/resources/documentation/windows/xp/all/proddocs/en-us/ipconfig.mspx?mfr=true> QUESTION 322 You network contains an Active Directory forest named Contoso.com. The forest contains two domains named Contoso.com and child.contoso.com. The Contoso.com domain contains a server named Server1. Server1 has the Network Policy and Access Services (NPAS) server role instead. You need to ensure that Server1 can read the dial-in properties of user accounts in the child.contoso.com domain. Which tool should you use? A. NetcfgB. Active Directory Users and ComputersC. UseraccountcontrolsettingsD. Authorization manager Answer: B QUESTION 323 Your network contains an Active Directory forest named contoso.com. The forest contains a server named Server1 that runs Windows Server 2008 R2 Service Pack 1 (SP1) Standard. The forest contains a server named Server2 that runs Windows Server 2008 R2 SP1 Enterprise. Server1 and Server2 have the Print and Document Services server role installed. You need to migrate the print queues, printer settings, printer ports, and language monitors from Server1 to Server2. Which tool should you use? A. PrintbrmB. Active Directory Users and ComputersC. Active Directory Sites and ServicesD. Devices and Printers Answer: A Explanation: To migrate print servers by using a command prompt To open a Command Prompt window, click Start, click All Programs, click Accessories, right-click Command Prompt, and then click Run as administrator. Type: CD %WINDIR%\System32\Spool\Tools Printbrm -s \<sourcecomputername> -b -f <filename>.printerExportType: Printbrm -s \<destinationcomputername> -r -f <filename>.printerExport<http://technet.microsoft.com/en-us/library/cc722360.aspx>

QUESTION 324 You manage a server named Server1 that runs Windows Server 2008 R2 Service Pack 1 (SP1). Server1 has the File Services server role installed. You have a file share named Share1. You need to ensure that any Microsoft Word files saved to Share1 that contain the word "confidential" are moved automatically to a folder named Confidential. What should you configure in File Server Resource Manager? (Each correct answer presents part of the solution. Choose three.) A. a classification ruleB. a file management taskC. a file screenD. a file groupE. a classification property Answer: ABE QUESTION 325 Your network contains two Active Directory forests named contoso.com and fabrikam.com. Fabrikam.com contains a server named Server1 that has the Print and Document Services server role installed. Server1 contains 50 shared printers. You join Server1 to the contoso.com domain. You need to ensure that all of the shared printers on Server1 are listed in the contoso.com forest. Which tool should you use? (Each correct answer presents a complete solution. Choose two.) A. Printui.exeB. Print ManagementC. Pmmngr.vbsD. Pubprn.vbsE. Setprinter.exe Answer: BDE Explanation: To migrate print servers by using Print Management Open Print

Management. In left pane, click Print Servers, right-click the print server that contains the printer queues that you want to export, and then click Export printers to a file. This starts the Printer Migration Wizard. On the Select the file location page, specify the location to save the printer settings, and then click Next to save the printers. Right-click the destination computer on which you want to import the printers, and then click Import printers from a file. This launches the Printer Migration Wizard. On the Select the file location page, specify the location of the printer settings file, and then click Next. On the Select import options page, specify the following import options: Import mode. Specifies what to do if a specific print queue already exists on the destination computer. List in the directory. Specifies whether to publish the imported print queues in the Active Directory Domain Services. Convert LPR Ports to Standard Port Monitors. Specifies whether to convert Line Printer Remote (LPR) printer ports in the printer settings file to the faster Standard Port Monitor when importing printers. Click Next to import the printers. Pubprn.vbs - Publishes a printer to the Active Directory Domain Services. [http://technet.microsoft.com/en-us/library/cc753116\(v=ws.10\).aspx](http://technet.microsoft.com/en-us/library/cc753116(v=ws.10).aspx) To migrate print servers by using a command prompt To open a Command Prompt window, click Start, click All Programs, click Accessories, right-click Command Prompt, and then click Run as administrator. Type: CD %WINDIR%\System32\Spool\Tools Printbrm -s <sourcecomputername> -b -f <filename>.printerExportType:Printbrm -s <destinationcomputername> -r -f <filename>.printerExport <http://technet.microsoft.com/en-us/library/cc722360.aspx> QUESTION 326 Your network contains an Active Directory domain named contoso.com. The domain contains a DNS server named Server1. You are configuring DirectAccess. You create a static host (A) record for isatap.contoso.com. You discover that the DNS server fails to respond to queries for the isatap.contoso.com record. You need to ensure that the DNS server resolves queries for isatap.contoso.com. What should you do? A. Create a stub zone for isatap.contoso.com. B. Run dnscmd /config /enableglobalqueryblocklist 0C. Run dnscmd /config /enableglobalqueryblocklist 1D. Create a canonical name (CNAME) record for isatap.contoso.com. Answer: B Explanation: dnscmd [<ServerName>] /config /enableglobalqueryblocklist 0|1 0 - If you want to disable the global query block list 1 - If you want the DNS Server service to ignore queries for the names in the block list [http://technet.microsoft.com/en-us/library/ee649250\(v=ws.10\).aspx](http://technet.microsoft.com/en-us/library/ee649250(v=ws.10).aspx) QUESTION 327 You need to ensure that only the members of the Power Users group and the members of the Administrators group can view the events in the System log. Which tools should you use? A. WecutilB. Event ViewerC. Local Group Policy EditorD. Local Users and Groups Answer: C QUESTION 328 Your network contains a domain controller named DC1 that runs Windows Server 2008 R2 Service Pack 1 (SP1). You need to create a script to clear the address table cache of the physical network interface. Which tool should you run in the script? A. dnscmd.exeB. arp.exeC. netbtugc.exeD. nbtstat.exe Answer: B Explanation: <http://technet.microsoft.com/en-us/library/bb490864.aspx> Arp Displays and modifies entries in the Address Resolution Protocol (ARP) cache, which contains one or more tables that are used to store IP addresses and their resolved Ethernet or Token Ring physical addresses. There is a separate table for each Ethernet or Token Ring network adapter installed on your computer. How to Clear the ARP Cache in Windows 1. Click the Windows Start Menu Orb and Type cmd into the search box. Right-Click cmd.exe and Click Run as administrator 2. In the prompt that appears, Type in the following commands: netsh interface ip deletearp cache Other ARP commands:- arp -a Display a list of ARP entries- arp -d <ip #> Delete an IP address from the ARP table- arp -s <ip #> <mac #> Add a static IP to a MAC address in the ARP table- Example: arp -s 231.32.54.315 00-FF-23-44-d7-11 QUESTION 329 Your network contains a DNS server that hosts a zone for fabrikam.com. Dynamic updates are enabled on the zone. The network contains a Web server named web1.fabrikam.com. Web1.fabrikam.com uses the 172.23.1.6 IP address. Web1.fabrikam.com hosts three websites as shown in the exhibit. (Click the Exhibit button.) You change the IP address of web1.fabrikam.com to 172.23.1.20. After the change, users report that they cannot access Web2 and Web3. The users can access Web1. You change the IP address of web1.fabrikam.com to 172.23.1.6. The users report that they can access all three websites. You need to ensure that when you change the IP address of web1.fabrikam.com, the users can access all three websites. What should you do?



A. Change the host (A) records of web2.fabrikam.com and web3.fabrikam.com to service location (SRV) records. B. Restart the Netlogon service on web1.fabrikam.com. C. Restart the DNS Client service on web1.fabrikam.com. D. Change the host (A) records of web2.fabrikam.com and web3.fabrikam.com to canonical name (CNAME) records. Answer: D QUESTION 330 Your network contains an Active Directory domain named contoso.com. The domain contains two domain controllers named DC1 and DC2. The service location (SRV) records for both of the domain controllers have default values. An SRV record for DC1 is shown in the exhibit. (Click the Exhibit button.) You need to modify the SRV records to ensure that DC2 is contacted for authentication only when DC1 is unavailable. What should you do?



A. Increase the weight value of the SRV records for DC2. B. Increase the weight value of the SRV records for DC1. C. Increase the priority value of the SRV records for DC1. D. Increase the priority value of the SRV records for DC2. Answer: D Explanation: Priority The priority of the server. Clients attempt to contact the server with the lowest priority. Weight A load-balancing mechanism that is used when selecting a target host from those that have the same priority. Clients randomly choose SRV records that specify target hosts to be contacted, with probability proportional to the weight

<http://technet.microsoft.com/en-us/library/cc961719.aspx> 100% Full Money Back Guarantee Promised By Braindump2go to All 70-642 Exam Candidates: Braindump2go is confident that our NEW UPDATED 70-642 Exam Questions and Answers are changed with Microsoft Official Exam Center, If you cannot PASS 70-642 Exam, nevermind, we will return your full money back! Visit Braindump2go exam dumps collection website now and download 70-642 Exam Dumps Instantly Today!

Compared Before Buying M	
Pass4sure	Brain
Not In Stock	100% Pass
/	448 Q&As - 1
/	\$99.99
/	Coupon Code

<http://www.braindump2go.com/70-642.html>