

Real Questions For Exam Microsoft 70-688 From Braindump2go(151-160)

QUESTION 151 You have client Windows 8.1 Enterprise computers. Some of the computers have shared printers. You need to configure all of the shared printers to use duplexing. The solution must not change the settings of any other printers. Which two Windows PowerShell cmdlets should you run? (Each correct answer presents part of the solution, Choose two,) A. Set-Printer B. Set-PrintConfiguration C. Get-Printer D. Get-PrinterProperty E. Get-PrintConfiguration Answer: BE Explanation:

<http://technet.microsoft.com/en-us/library/hh918352.aspx> QUESTION 152 Your company has a main office and a branch office. Each office contains several servers that run Windows Server 2012. You need to configure BranchCache for the client computers in the branch office. The solution must ensure that all of the cached content is in a central location. What should you run on each client computer? A. the Enable-BCLocal cmdlet B. the netdom command C. the netstat command D. the netsh command Answer: B Explanation:

<http://dougvitale.wordpress.com/2013/02/07/network-administration-commands-for-microsoft-windows-and-active-directory/#netdom> QUESTION 153 Drag and Drop Question You support Windows 8.1 Enterprise computers. AppLocker policies are deployed. Company policy states that AppLocker must be disabled. You need to disable AppLocker. Which three actions should you perform in sequence? (To answer, move the appropriate actions from the list of actions to the answer area and arrange them in the correct order.)

Actions	Answer Area
Delete all Software Restriction Policy rules.	
Run the gpupdate /force command.	
Run the gpresult /v command.	
Disable the Application Identity service.	
Delete all AppLocker rules.	
Disable the Application Information service.	

Answer:

Actions	Answer Area
Delete all Software Restriction Policy rules.	Run the gpupdate /force command.
Run the gpupdate /force command.	Run the gpresult /v command.
Run the gpresult /v command.	Delete all AppLocker rules.
Disable the Application Identity service.	
Delete all AppLocker rules.	
Disable the Application Information service.	

] QUESTION 154 Your network contains an Active Directory domain named contoso.com. The domain contains Windows 8.1 Enterprise client computers. Your company has a subscription to Microsoft Office 365. Each user has a mailbox that is stored in Office 365 and a user account in the contoso.com domain. Each mailbox has two email addresses. You need to add a third email address for each user. What should you do? A. From Windows Azure Active Directory Module for Windows PowerShell, run the Set-Mailbox cmdlet. B. From Active Directory Users and Computers, modify the E-mail attribute for each user. C. From Active Directory Domains and Trust add a UPN suffix for each user. D. From the Office 365 portal, modify the Users settings of each user. Answer: D QUESTION 155 Drag and Drop Question You have a Windows 8.1 computer. You have a 1-terabyte external hard drive. You purchase a second 1-terabyte external hard drive. You need to create a fault-tolerant volume that includes both external hard drives. You also need to ensure that additional external hard drives can be added to the volume. Which three actions should you perform in sequence? (To answer, move the appropriate actions from the list of actions to the answer area and arrange them in the correct order.)

Actions	Answer Area
From Storage Spaces, create a new storage pool. Set the Resiliency Type to three-way mirror .	
From Storage Spaces, create a new storage pool. Set the Resiliency Type to two-way mirror .	
Restore your data from the backup.	
From Storage Spaces, create a new storage pool. Set the Resiliency Type to parity .	
From Disk Management, create a mirrored volume containing the two external drives.	
From Disk Management, create and format a new volume on the second external drive.	
Back up the existing data on your original external hard drive.	

Answer:

Actions	Answer Area
From Storage Spaces, create a new storage pool. Set the Resiliency Type to three-way mirror .	From Storage Spaces, create a new storage pool. Set the Resiliency Type to two-way mirror .
From Storage Spaces, create a new storage pool. Set the Resiliency Type to two-way mirror .	
Restore your data from the backup.	From Disk Management, create a mirrored volume containing the two external drives.
From Storage Spaces, create a new storage pool. Set the Resiliency Type to parity .	
From Disk Management, create a mirrored volume containing the two external drives.	Back up the existing data on your original external hard drive.
From Disk Management, create and format a new volume on the second external drive.	
Back up the existing data on your original external hard drive.	

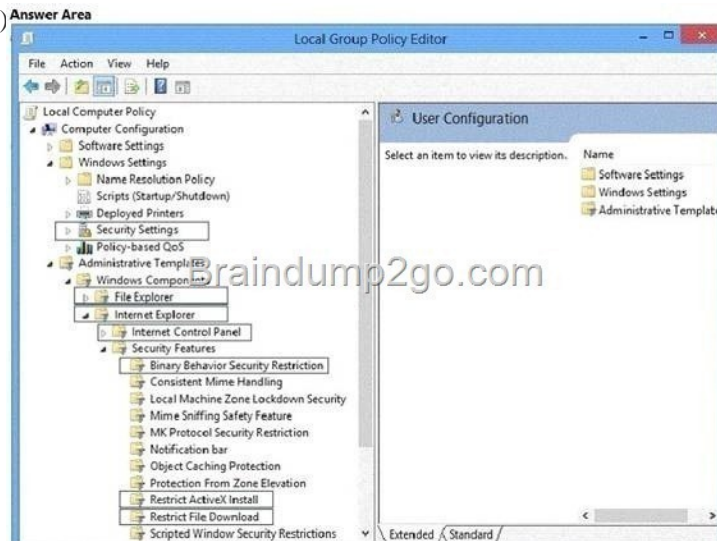
QUESTION 156 Your network contains an Active Directory domain named contoso.com. All client computers in the domain run Windows 8.1 Pro. All domain users have roaming user profiles. You need to prevent a user named User2 from being able to save changes to his roaming user profile. Which file you modify? A. registry.pol B. ntuser.pol C. ntuser.dat D. system.dat

Answer: B Explanation: http://www.experts-exchange.com/OS/Microsoft_Operating_Systems/Windows/XP/Q_21453487.html

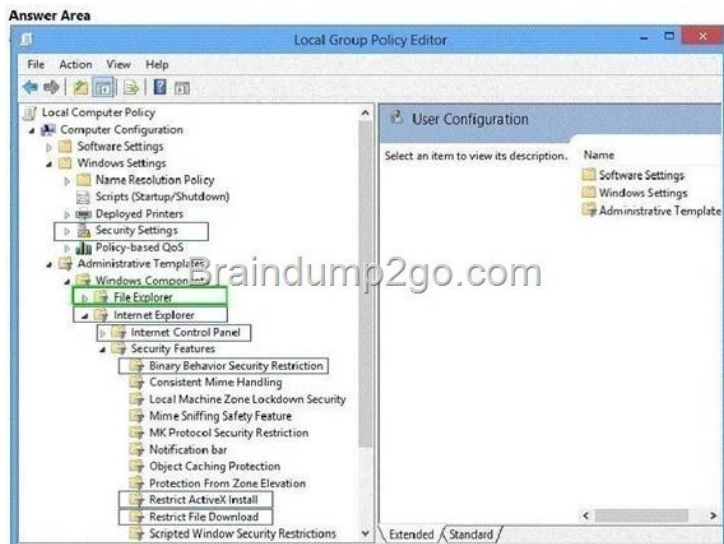
QUESTION 157 You manage Windows 8.1 client computers that are part of a workgroup. These computers are configured to use Microsoft Update. Updates are downloaded every day at 10:00 and installed automatically. Users report that their computers sometimes reboot without any interaction, You need to prevent unplanned automatic reboots of the computers. What should you do?

A. Disable the Re-prompt for restart with scheduled installations policy setting. B. Disable the Delay Restart for scheduled installations policy setting. C. Disable the No auto-restart with logged on users for scheduled automatic updates installations policy setting. D. Set the Configure automatic updating policy to 3 - Auto download and notify for install. Answer: A

QUESTION 158 Hotspot Question You support Windows 8.1 Enterprise desktop computers. One computer is a member of a workgroup and is used as a guest computer in a reception area. You need to configure the Windows SmartScreen setting to require administrator approval before running downloaded unknown software on the desktop computer. Which policy setting should you use? (To answer, select the appropriate object in the answer area.)



Answer:



] QUESTION 159 You have a Windows 8.1 Enterprise client computer. The computer uses BitLocker Drive Encryption (BitLocker) on a fixed disk that only stores data. You need to prevent any data from being written to the fixed disk. What should you do? A. Run the manage-bde command and specify the -lock switch. B. Run the manage-bde command and specify the -pause switch. C. Run the manage-bde command and specify the -off switch. D. Run the manage-bde command and specify the -on switch. Answer: A

QUESTION 160 Your network contains a web server named testweb.contoso.com that is used for testing. You have a Windows 8.1 Pro laptop. After a network administrator changes the IP address of the web server, you discover that you can no longer connect to testweb.contoso.com. You need to resolve immediately the issue that prevents you from connecting to the server. Which command line tool should you run? A. Set-DnsClient B. Netstat C. Ipconfig D. Netcfg Answer: B

Passing Microsoft 70-688 Exam successfully in a short time! Just using Braindump2go's Latest Microsoft 70-688 Dump
<http://www.braindump2go.com/70-688.html>