

Official 2014 Latest Microsoft 70-412 Exam Dump Free Download(201-210)!

QUESTION 201 You have a server named Server1 that runs Windows Server 2012 R2. When you install a custom Application on Server1 and restart the server, you receive the following error message: "The Boot Configuration Data file is missing some required information. File: BootBCD Error code: 0x0000034." You start Server1 by using Windows PE. You need to ensure that you can start Windows Server 2012 R2 on Server1. Which tool should you use? A. Bootsect B. Bootim C. Bootrec D. Bootcfg

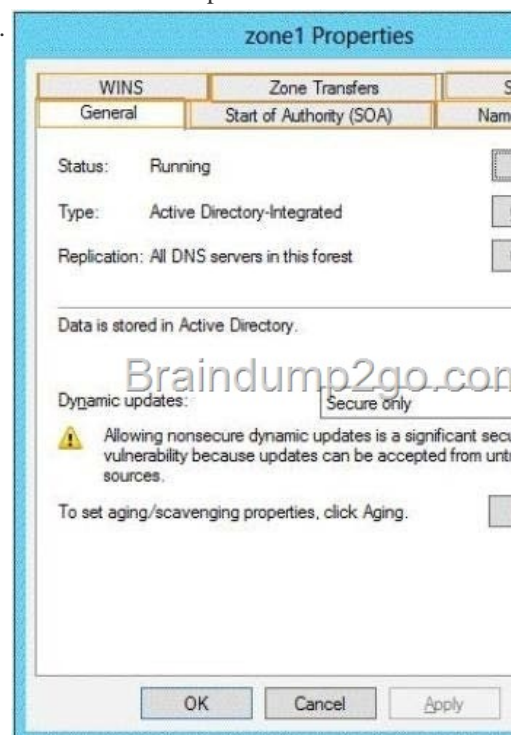
Answer: C Explanation:

http://answers.microsoft.com/en-us/windows/forum/windows_7-system/error-code-0x0000034-in-windows-7/4dcb8d38-a206-40ed-bced-55e4a4de9bf2

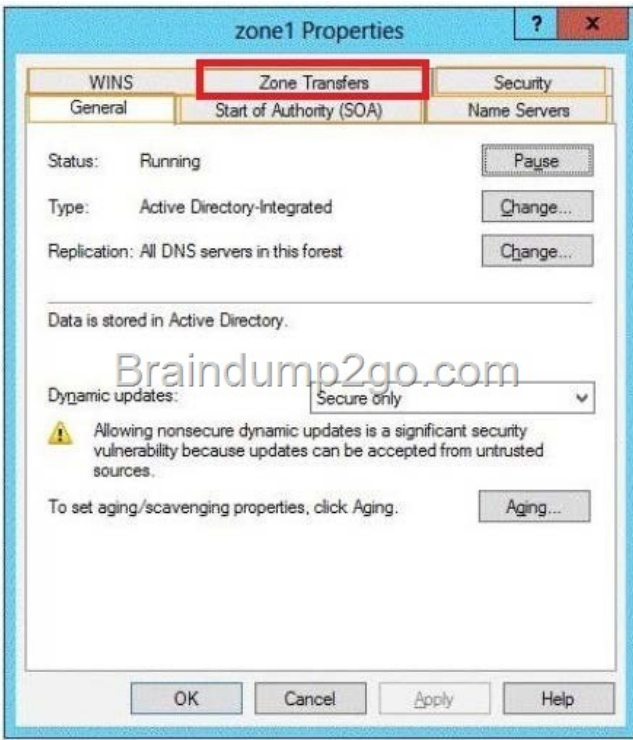
QUESTION 202 Your network contains an Active Directory domain named contoso.com. The domain contains a server named Server1 that runs Windows Server 2012 R2. Server1 has the Active Directory Rights Management Services server role installed. Your company works with a partner organization that does not have its own Active Directory Rights Management Services (AD RMS) implementation. You need to create a trust policy for the partner organization. The solution must meet the following requirements: Grant users in the partner organization access to protected content. Provide users in the partner organization with the ability to create protected content. Which type of trust policy should you create? A. a federated trust B. Windows Live ID C. a trusted publishing domain D. a trusted user domain Answer: A QUESTION 203 Hotspot Question Your network contains an Active Directory domain named contoso.com. All servers run Windows Server 2012 R2. The domain contains two domain controllers. The domain controllers are configured as shown in the following table.

Domain controller name	Configu
DC1	<ul style="list-style-type: none">Domain controllerDNS server
DC2	<ul style="list-style-type: none">Read-only domain controller (RODC)DNS server

On DC1, you create an Active Directory-integrated zone named Zone1. You verify that Zone1 replicates to DC2. You use DNSSEC to sign Zone1. You discover that the updates to Zone1 fail to replicate to DC2. You need to ensure that Zone1 replicates to DC2. What should you configure on DC1? To answer, select the appropriate tab in the answer area.



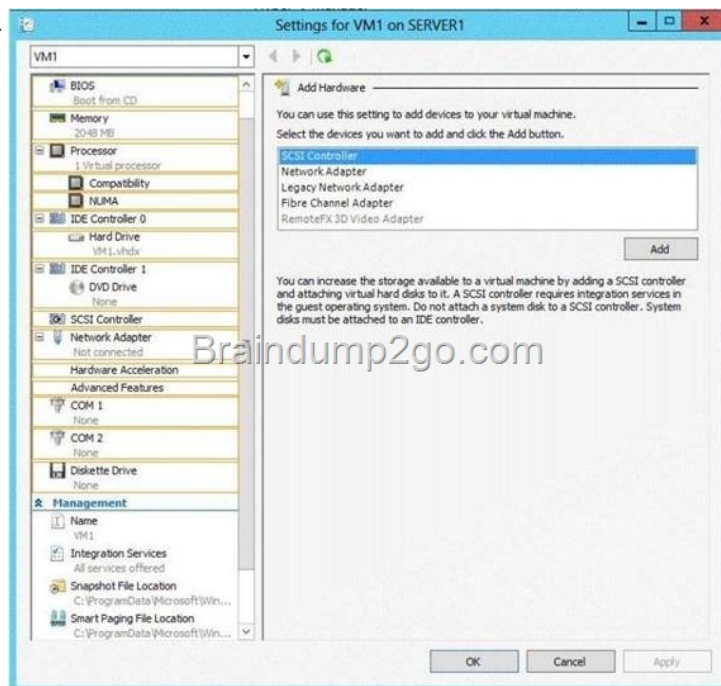
Answer:



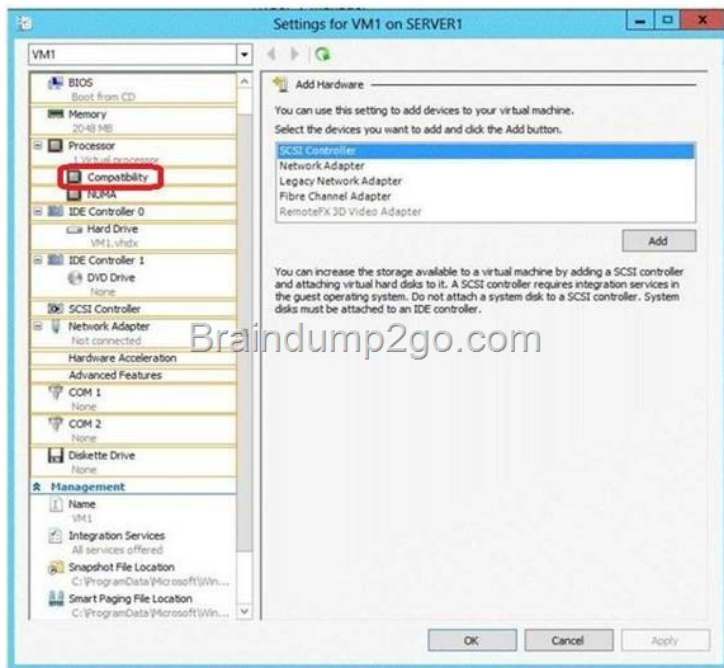
QUESTION 204 Hotspot Question Your network contains two Hyper-V hosts that are configured as shown in the following table.

Host
Server1
Server2

You create a virtual machine on Server1 named VM1. You plan to export VM1 from Server1 and import VM1 to Server2. You need to ensure that you can start the imported copy of VM1 from snapshots. What should you configure on VM1? To answer, select the appropriate node in the answer area.



Answer:



Note: * If the CPUs are from the same manufacturer but not from the same type, you may need to use Processor Compatibility. *(incorrect) The network adapter is already disconnected. QUESTION 205 Your network contains an Active Directory domain named contoso.com. All domain controllers run Windows Server 2012 R2. The domain contains two domain controllers. The domain controllers are configured as shown in the following table.

Domain controller name	Site name	Configuration
DC1	Main	Domain controller
DC10	Branch	Read-only domain controller (RODC)

You configure a user named User1 as a delegated administrator of DC10. You need to ensure that User1 can log on to DC10 if the network link between the Main site and the Branch site fails. What should you do? A. On DC10, run ntdsutil and configure the settings in the Roles context. B. On DC10, run ntdsutil and configure the settings in the Local Roles context. C. Modify the properties of the DC10 computer account. D. Run repadmin and specify /replsingleobject parameter. Answer: B Explanation: Modify the following policy: Computer Configuration\Windows Settings\Security Settings\Local Policies\User Rights Assignment\Allow log on locally Note: * User Rights Assignment policies determines which users or groups have logon rights or privileges on the computer. * Delegated administrator accounts gain local administrative permissions to the RODC. These users can operate with privileges equivalent to the local computer's Administrators group. They are not members of the Domain Admins or the domain built-in Administrators groups. This option is useful for delegating branch office administration without giving out domain administrative permissions. Configuring delegation of administration is not required. QUESTION 206 You have a server named Server1 that runs Windows Server 2012 R2. You install the File and Storage Services server role on Server1. From Windows Explorer, you view the properties of a folder named Folder1 and you discover that the Classification tab is missing. You need to ensure that you can assign classifications to Folder1 from Windows Explorer manually. What should you do? A. From Folder Options, clear Hide protected operating system files (Recommended). B. Install the File Server Resource Manager role service. C. From Folder Options, select the Always show menus. D. Install the Share and Storage Management Tools. Answer: B Explanation: B. Classification Management is a feature of FSRM <http://technet.microsoft.com/en-us/library/dd759252.aspx> [http://technet.microsoft.com/en-us/library/dd758759\(v=WS.10\).aspx](http://technet.microsoft.com/en-us/library/dd758759(v=WS.10).aspx) QUESTION 207 Your network contains an Active Directory forest named contoso.com. The forest contains a single domain. The forest contains three Active Directory sites named SiteA, SiteB, and SiteC. The sites contain four domain controllers. The domain controllers are configured as shown in the following table.

Site name
SiteA
SiteB
SiteC

An IP site link exists between each site. You discover that the users in SiteC are authenticated by the domain controllers in SiteA and SiteB. You need to ensure that the SiteC users are authenticated by the domain controllers in SiteB, unless all of the domain controllers in SiteB are unavailable. What should you do? A. Create an SMTP site link between SiteB and SiteC. B. Create additional connection objects for DC3 and DC4. C. Decrease the cost of the site link between SiteB and SiteC. D. Create additional connection objects for DC1 and DC2. Answer: C Explanation: By decreasing the site link cost between SiteB and SiteC the SiteC users would be authenticated by SiteB rather than by SiteA. QUESTION 208 Your network contains two servers named Server1 and Server2 that run Windows Server 2012 R2. Server1 and Server2 have the Hyper-V server role installed. Server1 and Server2 are configured as Hyper-V replicas of each other. Server2 hosts a virtual machine named VM5. VM5 is replicated to Server1. You need to verify whether the replica of VM5 on Server1 is functional. The solution must ensure that VM5 remains accessible to clients. What should you do from Hyper-V Manager? A. On a server in Cluster2, click Migrate Roles. B. On a server in Cluster2, configure Cluster-Aware Updating. C. On a server in Cluster1, click Move Core Cluster Resources, and then click Select Node. D. On a server in Cluster1, configure Cluster-Aware Updating. Answer: B Explanation: Note: * Cluster-Aware Updating (CAU) is an automated feature that allows you to update clustered servers with little or no loss in availability during the update process. During an Updating Run, CAU transparently performs the following tasks: Puts each node of the cluster into node maintenance mode Moves the clustered roles off the node Installs the updates and any dependent updates Performs a restart if necessary Brings the node out of maintenance mode Restores the clustered roles on the node Moves to update the next node For many clustered roles (formerly called clustered applications and services) in the cluster, the automatic update process triggers a planned failover, and it can cause a transient service interruption for connected clients. However, in the case of continuously available workloads in Windows Server 2012 R2, such as Hyper-V with live migration or file server with SMB Transparent Failover, CAU can coordinate cluster updates with no impact to the service availability. QUESTION 209 Your network contains an Active Directory domain named contoso.com. The domain contains two member servers named Server1 and Server2. All servers run Windows Server 2012 R2. Server1 and Server2 have the Failover Clustering feature installed. The servers are configured as nodes in a failover cluster named Cluster1. Cluster1 has access to four physical disks. The disks are configured as shown in the following table.

Disk name	Disk setting
Disk1	NTFS with BitLocker Drive Encryption (BitLocker) enabled
Disk2	FAT32
Disk3	ReFS
Disk4	NTFS

You need to ensure that all of the disks can be added to a Cluster Shared Volume (CSV). Which two actions should you perform? (Each correct answer presents part of the solution. Choose two.) A. Enable BitLocker on Disk4. B. Format Disk3 to use NTFS. C. Format Disk2 to use NTFS. D. Disable BitLocker on Disk1. Answer: BC Explanation: You cannot use a disk for a CSV that is formatted with FAT, FAT32, or Resilient File System (ReFS). QUESTION 210 Your network contains an Active Directory forest named contoso.com. The contoso.com domain only contains domain controllers that run Windows Server 2012 R2. The forest contains a child domain named child.contoso.com. The child.contoso.com domain only contains domain controllers that run Windows Server 2008 R2. The child.contoso.com domain contains a member server named Server1 that runs Windows Server 2012 R2. You have access to four administrative user accounts in the forest. The administrative user accounts are configured as shown in the following table.

Account name	Location	Group membership
Admin1	Contoso.com	Enterprise Admins
Admin2	Contoso.com	Schema Admins
Admin3	Child.contoso.com	Domain Admins
Admin4	Server1	Administrators

You need to ensure that you can add a domain controller that runs Windows Server 2012 R2 to the child.contoso.com domain. Which account should you use to run adprep.exe? A. Admin1 B. Admin2 C. Admin3 D. Admin4 Answer: C Passing Microsoft 70-412 Exam successfully in a short time! Just using Braindump2go's Latest Microsoft 70-412 Dump:

<http://www.braindump2go.com/70-412.html>