

Official 2014 Latest Microsoft 70-410 Exam Dump Free Download(51-60)!

QUESTION 51 You have a server named Core1 that has a Server Core Installation of Windows Server 2012 R2. Core1 has the Hyper-V server role installed Core1 has two network adapters from different third-party hardware vendors. You need to configure network traffic failover to prevent connectivity loss if a network adapter fails. What should you use? A. New-NetSwitchTeam B. Add-NetSwitchTeamMember C. Install-Feature D. netsh.exe Answer: A Explanation: A. Creates a new switch team B. Adds a network adapter member to an existing switch team C. Not a valid cmdlet D. Network shell (netsh) is a command-line utility that allows you to configure and display the status of various network communications server role

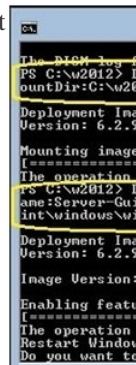
<http://technet.microsoft.com/en-us/library/jj553814.aspx> [http://technet.microsoft.com/en-us/library/jj553811\(v=wps.620\).aspx](http://technet.microsoft.com/en-us/library/jj553811(v=wps.620).aspx)
[http://technet.microsoft.com/en-us/library/cc725935\(v=ws.10\).aspx](http://technet.microsoft.com/en-us/library/cc725935(v=ws.10).aspx)

QUESTION 52 You have a server named Server1 that runs Windows Server 2012 R2. You connect three new hard disks to Server1. You need to create a storage space that contains the three disks. The solution must meet the following requirements: - Provide fault tolerance if a single disk fails. - Maximize the amount of files that can be stored in the storage space. What should you create? A. A simple space B. A spanned volume C. A mirrored space D. A parity space Answer: D Explanation: A. Stripes data across a set of pool disks, and is not resilient to any disk failures. B. A spanned volume is a dynamic volume consisting of disk space on more than one physical disk and not fault tolerant C. Fault tolerant but Not max space D. Fault tolerant and better space ratio Parity spaces are designed for capacity efficiency and increased resiliency. Parity spaces are best suited for archival data and streaming media, such as music and videos.

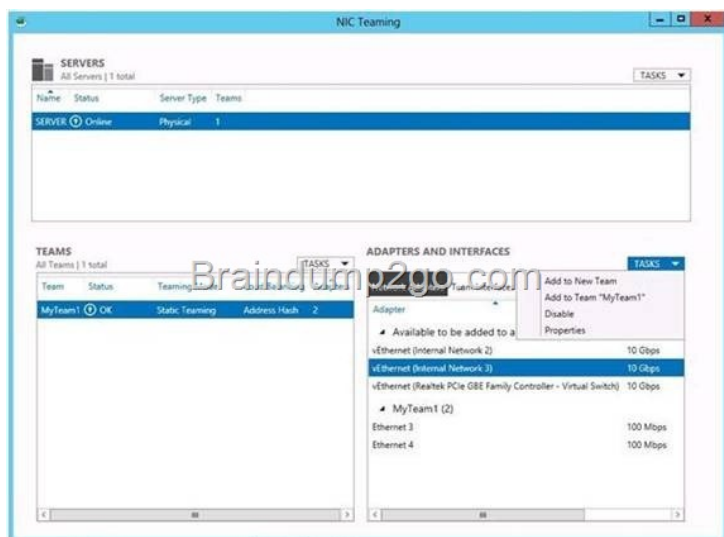
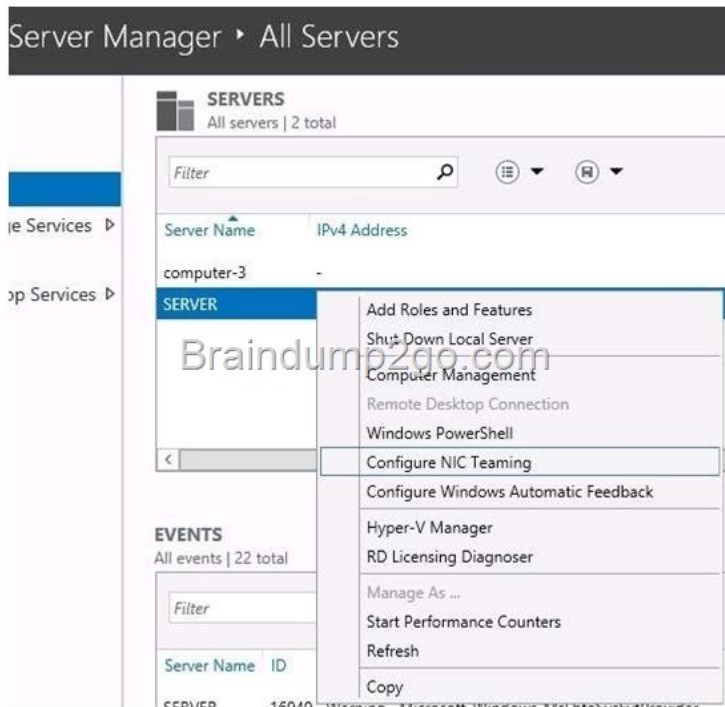
<http://social.technet.microsoft.com/wiki/contents/articles/11382.storage-spaces-frequently-asked-questions-faq.aspx>

<http://social.technet.microsoft.com/wiki/contents/articles/15198.storage-spaces-overview.aspx>

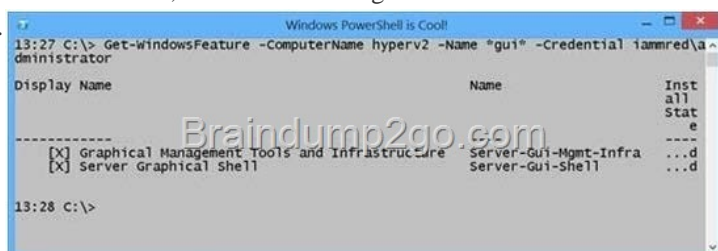
QUESTION 53 You perform a Server Core Installation of Windows Server 2012 R2 on a server named Server1. You need to add a graphical user interface (GUI) to Server1. Which tool should you use? A. The setup.exe command B. The dism.exe command C. The imagex.exe command D. The Add-WindowsPackage cmdlet Answer: B Explanation: The DISM command is called by the Add-WindowsFeature command. Here is the systax for DISM:
Dism /online /enable-feature /featurename:ServerCore-FullServer /featurename:ServerGui-Shell /featurename:Server-Gui-Mgmt



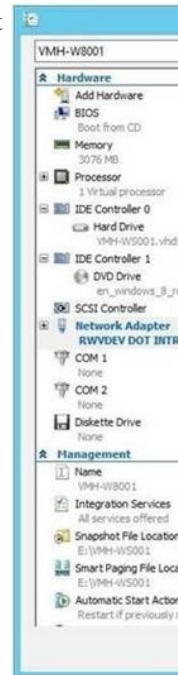
QUESTION 54 You have a server named Server1 that runs Windows Server 2012 R2. Server1 has five network adapters. Three of the network adapters are connected to a network named LAN1. The two other network adapters are connected to a network named LAN2. You need to create a network adapter team from the three network adapters connected to LAN 1. Which tool should you use? A. Routing and Remote Access B. Network and Sharing Center C. Server Manager D. Network Load Balancing Manager Answer: C Explanation:



<http://technet.microsoft.com/en-us/library/hh831648.aspx> QUESTION 55 You have a server named Server1 that runs Windows Server 2012 R2. You need to remove Windows Explorer, Windows Internet Explorer, and all related components and files from Server1. What should you run on Server1? A. `Uninstall-WindowsFeature Server-Gui-Mgmt-Infra Remove` B. `Uninstall-WindowsFeature Server-Gui-Shell Remove` C. `msiexec.exe /uninstall iexplore.exe /x` D. `msiexec.exe /uninstall explorer.exe /x` Answer: B Explanation: A. Would be a server core install B. No IE or taskbar, explorer or control panel C. Would leave components D. Would leave components In Windows Server 2012 R2, you can remove the Server Graphical Shell, resulting in the "Minimal ServerInterface". This is similar to a Server with a GUI installation, but Internet Explorer 10, Windows Explorer, the desktop, and the Start screen are not installed. Microsoft Management Console (MMC), Server Manager, and a subset of Control Panel are still present. If the server has a full installation of Windows Server, and I need to bring the server down to minimal serverinterface, I only need to remove the Server-GUI-Shell.



[http://technet.microsoft.com/en-us/library/hh831786\(v=ws.11\).aspx](http://technet.microsoft.com/en-us/library/hh831786(v=ws.11).aspx) QUESTION 56 You have a server named Server1 that runs Windows Server 2012 R2. Server1 has the Hyper-V server role installed. On Server1, you create a virtual machine named VM1. VM1 has a legacy network adapter. You need to assign a specific amount of available network bandwidth to VM1. What should you do first? A. Remove the legacy network adapter, and then run the Set-VMNetworkAdaptercmdlet. B. Add a second legacy network adapter, and then run the Set-VMNetworkAdaptercmdlet. C. Add a second legacy network adapter, and then configure network adapter teaming. D. Remove the legacy network adapter, and then add a network adapter Answer: D Explanation: A. Set-VMNetworkAdaptercmdlet configures features of the virtual network adapter in a virtual machine or the management operating system B. The legacy network adapter doesn't support bandwidth management C. The legacy network adapter doesn't support bandwidth management D. Add a New network adapter The legacy network adapter doesn't support bandwidth management



[http://technet.microsoft.com/en-us/library/hh848457\(v=wps.620\).aspx](http://technet.microsoft.com/en-us/library/hh848457(v=wps.620).aspx)

<http://www.techrepublic.com/blog/networking/set-bandwidth-limits-for-hyper-v-vms-with-windows-server-2012/5924> QUESTION 57 Your network contains an Active Directory domain named adatum.com. The domain contains a server named Server1 that runs Windows Server 2012 R2. On a server named Core1, you perform a Server Core Installation of Windows Server 2012 R2. You join Core1 to the adatum.com domain. You need to ensure that you can use Event Viewer on Server1 to view the event logs on Core1. What should you do on Core1? A. Run the Enable-NetFirewallRulecmdlet. B. Run sconfig.exe and configure remote management C. Run the Disable-NetFirewallRulecmdlet. D. Run sconfig.exe and configure the network settings. Answer: A Explanation: A. Allows MMC snap in for Event Viewer. B. Modifies service entries C. Would Disable a firewall rule which was enabled D. Modifies service entries Enable-NetFirewallRule -DisplayGroup "Remote Event Log Management" ▶ To configure Windows Firewall to allow MMC snap-in

• To allow all MMC snap-ins to connect to the remote server:
Enable-NetFirewallRule -DisplayGroup "Remote Event Log Management" -Allow

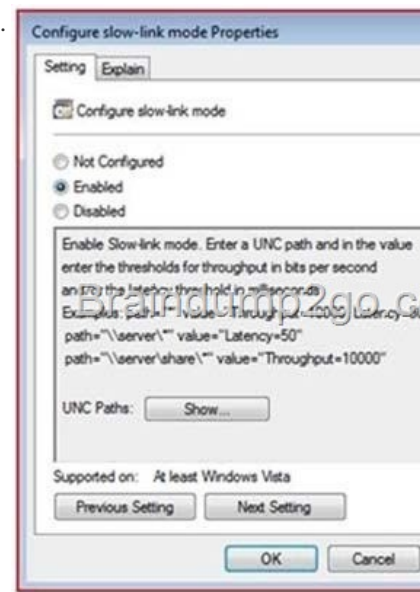
• To allow only specific MMC snap-ins to connect to the remote server:
Enable-NetFirewallRule -DisplayGroup "Remote Event Log Management" -Allow -RemoteAddress 10.10.10.10

Where: <Rulegroup> is one of the values from the following table:

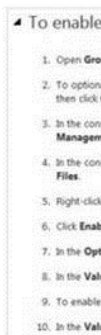
MMC snap-in
Event Viewer

[http://technet.microsoft.com/en-us/library/cc990290\(v=ws.10\).aspx](http://technet.microsoft.com/en-us/library/cc990290(v=ws.10).aspx) <http://technet.microsoft.com/en-us/library/jj574205.aspx> <http://mikefrobbins.com/2013/02/28/use-powershell-to-remotely-enable-firewall-exceptions-on-windows-server-2012/> QUESTION 58 Your network contains a file server named Server1 that runs Windows Server 2012 R2. All client computers run Windows 8. You need to ensure that when users are connected to the network, they always use local offline files that are cached from Server1. Which Group Policy setting should you configure? A. Configure slow-link mode. B. Configure Slow link speed C. Enable file

synchronization on costed networks D. Turn on economical application of Administratively assigned Offline Files. Answer: A
Explanation: A. Offline Files to provide faster access to cached files and redirected folders. B. Defines a slow connection for purposes of Applying and updating Group Policy. C. automatically tracks roaming and bandwidth usage limits while on metered connections D. Lists network files and folders that are always available for offline use. This policy makes the specified files and folders available offline to users of the computer. When Offline Files is operating in the slow-link mode, all network file requests are satisfied from the OfflineFiles cache. This is similar to a user working offline. If you enable this policy setting, Offline Files uses the slow-link mode if the network throughput between the client and the server is below (slower than) the Throughput threshold parameter, or if the round-trip network latency is above (slower than) the Latency threshold parameter.



<http://technet.microsoft.com/en-us/library/hh968298.aspx> <http://technet.microsoft.com/en-us/library/cc957631.aspx>
<http://technet.microsoft.com/en-us/library/jj127408.aspx> http://www.group-policy.com/ref/policy/2229/Configure_slow-link_mode



QUESTION 59 Your network contains an Active Directory domain named contoso.com. All servers run either Windows Server 2008 R2 or Windows Serve 2012 R2. All client computers run either Windows 7 or Windows 8. The domain contains a member server named Server1 that runs Windows Server 2012 R2. Server1 has the File and Storage Services server role installed. On Server1, you create a share named Share1. You need to ensure that users can use Previous Versions to restore the files in Share1. What should you configure on Server1? A. The Shadow Copies settings B. A Windows Server Backup schedule C. A data recovery agent D. The Recycle Bin properties Answer: A Explanation: A. Enable and schedule shadow copies for Share1 B. The backup doesn't give users access until files are restored D. No settings for file version

[http://technet.microsoft.com/en-us/library/cc786104\(v=ws.10\).aspx](http://technet.microsoft.com/en-us/library/cc786104(v=ws.10).aspx) QUESTION 60 You have a server named Server1 that runs Windows Server 2012 R2. Server1 has the Print and Document Services server role installed. Server1 is connected to two identical print devices. You need to ensure that users can submit print jobs to the print devices. The solution must ensure that if one print device fails, the print jobs will print automatically on the other print device. What should you do on Server1? A. Add two printers and configure the priority of each printer. B. Add one printer and configure printer pooling. C. Install the Network Load Balancing (NLB) feature, and then add one printer. D. Install the Failover Clustering feature, and then add one printer Answer: B
Explanation: A. expedite documents that need to be printed immediately B. A printing pool is one logical printer connected to

multiple printers through multiple ports of the print server. The printer that is idle receives the next document sent to the logical printer. When printing to a printer pool, the spooler will send waiting jobs to alternate ports. If the original or alternate ports are not available C. NLB for printing is not supported D. Would need 2 nodes A printing pool is one logical printer connected to multiple printers through multiple ports of the print server. The printer that is idle receives the next document sent to the logical printer. This is useful in a network with a high volume of printing because it decreases the time users wait for their documents. A printing pool also simplifies administration because multiple printers can be managed from the same logical printer on a server. If one device within a pool stops printing, the current document is held at that device. The succeeding documents print to other devices in the pool, while the delayed document waits until the nonfunctioning printer is fixed. Efficient printer pools have the following characteristics: All printers in the pool are the same model. Printer ports can be of the same type or mixed (parallel, serial, and network). It is recommended that all printers be in one location. Because it is impossible to predict which printer will receive the document, keep all printers in a pool in a single location. Otherwise, users might have a hard time finding their printed document.

[http://technet.microsoft.com/en-us/library/cc757086\(v=ws.10\).aspx](http://technet.microsoft.com/en-us/library/cc757086(v=ws.10).aspx)

[http://technet.microsoft.com/en-us/library/cc784619\(v=ws.10\).aspx](http://technet.microsoft.com/en-us/library/cc784619(v=ws.10).aspx) <http://technet.microsoft.com/en-us/library/cc958172.aspx> You can create a printing pool to automatically distribute print jobs to the next available printer. A printing pool is one logical printer connected to multiple printers through multiple ports of the print server. The printer that is idle receives the next document sent to the logical printer. Passing Microsoft 70-410 Exam successfully in a short time! Just using Braindump2go's Latest Microsoft 70-410 Dump: <http://www.braindump2go.com/70-410.html>