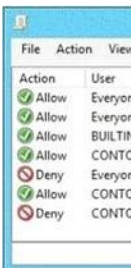


Official 2014 Latest Microsoft 70-410 Exam Dump Free Download(401-410)!

QUESTION 401 You have a server named Server1 that runs Windows Server 2012 R2. Server1 has three physical network adapters named NIC1, NIC2, and NIC3. On Server1, you create a NIC team named Team1 by using NIC1 and NIC2. You configure Team1 to accept network traffic on VLAN 10. You need to ensure that Server1 can accept network traffic on VLAN 10 and VLAN 11. The solution must ensure that the network traffic can be received on both VLANs if a network adapter fails. What should you do? A. From Server Manager, change the load balancing mode of Team1. B. Run the New-NetLbfoTeam cmdlet. C. From Server Manager, add an interface to Team1. D. Run the Add-NetLbfoTeamMember cmdlet. Answer: C QUESTION 402 You have a server named Server1 that runs Windows Server 2012 R2. You need to create a script that will create and mount a virtual hard disk. Which tool should you use? A. vdsldr.exe B. diskpart.exe C. fsutil.exe D. vds.exe Answer: B QUESTION 403 Hotspot Question Your network contains an Active Directory domain named contoso.com. All domain controllers run Windows Server 2012 R2. All server are configured to enforce AppLocker policies. You install a server named Server1. On Server1, you install an application named appl.exe in a folder located on C:App1. You have two domain groups named Group1 and Group2. A user named User1 is a member of Group1 and Group2. You create a Group Policy object (GPO) named GPO1. You link GPO1 to contoso.com. You create the executable rules as shown in the exhibit by using the Create Executable Rules wizard. (Click the Exhibit button.)



Action	User
Allow	Everyone
Allow	Everyone
Allow	BUILTIN\Administrators
Deny	Everyone
Allow	CONTOSO\Group1
Deny	CONTOSO\Group2

To answer, complete each statement according to the information presented in the exhibit. Each correct selection is worth one point.

Answer Area

User1 can run regedit.exe if ...

User1 is removed from Group2.
User1 is added to the Domain Admins group.
regedit.exe is renamed as registryeditor.exe.

User1 can run app1.exe if ...

app1.exe is renamed as app2.exe.
the Deny rule for app1.exe is removed.
an exception is added to the default rules.
Group1 is added to the Domain Admins group.
User1 is added to the BUILTIN\Administrators group

Answer:

Answer Area

User1 can run regedit.exe if ...

User1 is removed from Group2.
User1 is added to the Domain Admins group.
regedit.exe is renamed as registryeditor.exe.

User1 can run app1.exe if ...

app1.exe is renamed as app2.exe.
the Deny rule for app1.exe is removed.
an exception is added to the default rules.
Group1 is added to the Domain Admins group.
User1 is added to the BUILTIN\Administrators group

QUESTION 404 You have virtual machine named VM1. VM1 uses a fixed size virtual hard disk (VHD) named disk1.vhd. Disk1.vhd is 200 GB. You shut down VM1. You need to reduce the size of disk1.vhd. Which action should you select from the Edit Virtual Hard Disk Wizard? A. Merge B. Compact C. Shrink D. Convert Answer: D QUESTION 405 You have a Hyper-V host named Server1 that runs Windows Server 2012 R2. Server1 hosts 50 virtual machines that run Windows Server 2012 R2. Your company uses smart cards for authentication. You need to ensure that you can use smart card authentication when you connect to the

virtual machine by using Virtual Machine Connection. What should you configure? A. The NUMA Spanning settings B. The RemoteFX settings C. The Enhanced Session Mode Policy D. The Integration Services settings Answer: C QUESTION 406 Your network contains an Active Directory domain named contoso.com. The domain contains a server named Server1. Server1 runs Windows Server 2012 R2. You need to create a 3-TB virtual hard disk (VHD) on Server1. Which tool should you use? A. Computer Management B. Server Manager C. Share and Storage Management D. New-VirtualDisk Answer: A QUESTION 407 Hotspot Question You have a Hyper-V host named Server1 that runs Windows Server 2012 R2. Server1 hosts 40 virtual machines that run Windows Server 2008 R2. The virtual machines connect to a private virtual switch. You have a file that you want to copy to all of the virtual machines. You need to identify to which servers you can copy files by using the Copy-VmFile cmdlet. What command should you run? To answer, select the appropriate options in the answer area.

Answer Area

-ComputerName Server1 |

Compare-Vm
Get-Vm
Get-VmHost

Get-VIntegrationService -Name

"Data Exchange Service"
"Guest Service Interface"
"Heartbeat Service"

Answer:

Answer Area

-ComputerName Server1 |

Compare-Vm
Get-Vm
Get-VmHost

Get-VIntegrationService -Name

"Data Exchange Service"
"Guest Service Interface"
"Heartbeat Service"

QUESTION 408 Hotspot Question Your network contains an Active Directory forest. The forest contains a single domain named contoso.com. AppLocker policies are enforced on all member servers. You view the AppLocker policy applied to the member servers as shown in the exhibit. (Click the Exhibit button.)

Group Policy Management Editor					
File Action View Help					
Action	User	Name	Condition	Exceptions	
Deny	CONTOSO\Server Admins	%PROGRAMFILES%\Internet Explorer\iexplore.exe	Path		
Allow	CONTOSO\Domain Admins	%PROGRAMFILES%\Internet Explorer\iexplore.exe	Path		
Allow	Everyone	(Default Rule) All files located in the Program Files folder	Path		
Allow	Everyone	(Default Rule) All files located in the Windows folder	Path		
Deny	CONTOSO\Domain Users	%PROGRAMFILES%\Internet Explorer\iexplore.exe	Path		
Allow	BUILTIN\Administrators	(Default Rule) All files	Path		
Allow	Everyone	Program Files: MICROSOFT® WINDOWS® OPERATING SY...	Publisher		
Allow	Everyone	Program Files: INTERNET EXPLORER signed by O=MICROS...	Publisher		
Allow	Everyone	Program Files: MICROSOFT(R) CONNECTION MANAGER si...	Publisher		

To answer, complete each statement according to the information presented in the exhibit. Each correct selection is worth one point.

Answer Area

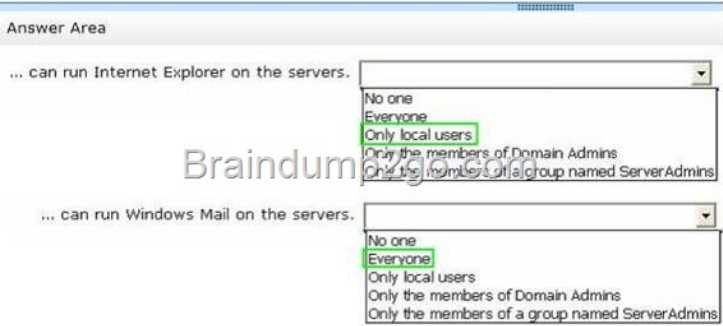
... can run Internet Explorer on the servers.

No one
Everyone
Only local users
Only the members of Domain Admins
Only the members of a group named ServerAdmins

... can run Windows Mail on the servers.

No one
Everyone
Only local users
Only the members of Domain Admins
Only the members of a group named ServerAdmins

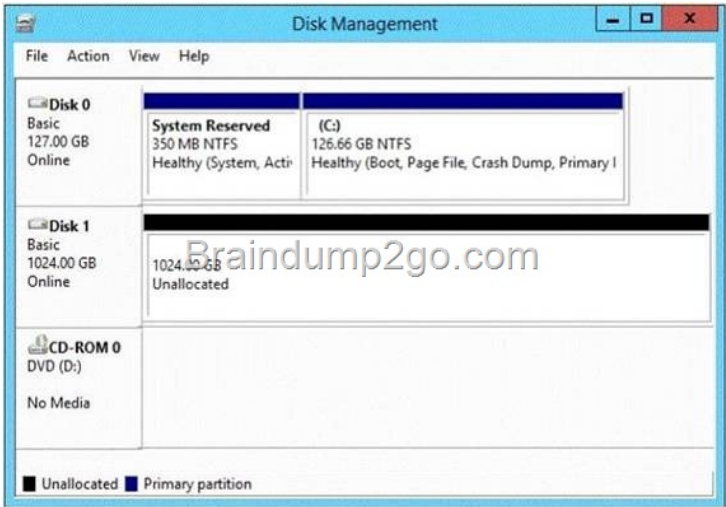
Answer:



QUESTION 409 Your network contains an Active Directory domain named contoso.com. The domain contains a member server named Server1. Server1 runs Windows Server 2012 R2 and has the DHCP Server server role installed. You create two IPv4 scopes on Server1. The scopes are configured as shown in the following table.

Scope name	IPv4 scope
Subnet_Tor	192.168.2.0/24
Subnet_Mtl	192.168.1.0/24

The DHCP clients in Subnet_Tor can connect to the client computers in Subnet_Mtl by using an IP address or a FQDN. You discover that the DHCP clients in Subnet_Mtl can connect to client computers in Subnet_Tor by using an IP address only. You need to ensure that the DHCP clients in both subnets can connect to any other DHCP client by using a FQDN. What should you add? A. The 015 DNS Domain Name option to Subnet_Mtl B. The 015 DNS Domain Name option to Subnet_Tor C. The 006 DNS Servers option to Subnet_Mtl D. The 006 DNS Servers option to Subnet_Tor Answer: C QUESTION 410 You have a server named Server1 that runs Windows Server 2012 R2. You add an additional disk to Server1 as shown in the exhibit. (Click the Exhibit button.)



You need to ensure that users can access the additional disk from drive C. What should you do? A. Convert Disk 0 and Disk 1 to dynamic disks and extend a volume. B. Convert Disk 1 to a dynamic disk and create a spanned volume. C. Create a simple volume on Disk 1 and mount the volume to a folder. D. Convert Disk 0 to a dynamic disk and add a mirror. Answer: C Passing Microsoft 70-410 Exam successfully in a short time! Just using Braindump2go's Latest Microsoft 70-410 Dump:

<http://www.braindump2go.com/70-410.html>