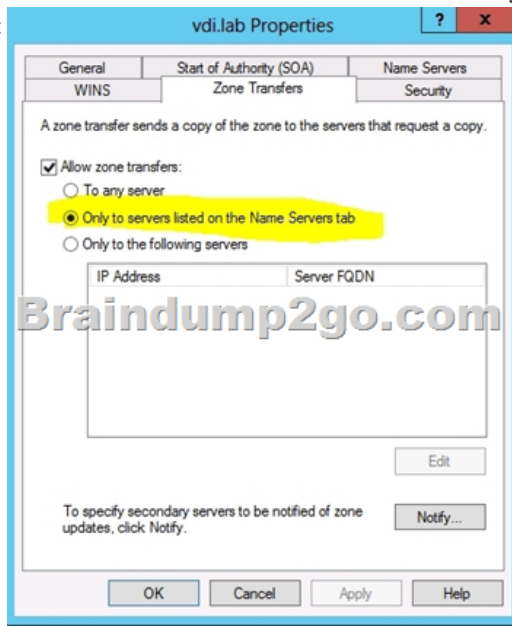


[Oct.-2016-Update] High Quality 70-417 Dumps & 70-417 PDF & 70-417 VCE 252Q&As Free Share [NQ26-NQ31]

2016/10 New Microsoft 70-417: Upgrading Your Skills to MCSA Windows Server 2012 R2 Exam Questions Updated Today! Free Instant Download 70-417 Exam Dumps (PDF & VCE) 612Q&As from Braindump2go.com Today! 100% Real Exam Questions! 100% Exam Pass Guaranteed! 1.| 2016/10 Latest 70-417 Exam Dumps (PDF & VCE) 612Q&As Download: <http://www.braindump2go.com/70-417.html> 2.| 2016/10 Latest 70-417 Exam Questions & Answers: QUESTION 26 Your network contains two servers named Server1 and Server2. Both servers run Windows Server 2012 R2 and have the DNS Server server role installed. On Server1, you create a standard primary zone named contoso.com. You need to ensure that Server2 can host a secondary zone for contoso.com. What should you do from Server1? A. Create a zone delegation that points to Server2. B. Create a trust anchor named Server2. C. Convert contoso.com to an Active Directory-integrated zone. D. Add Server2 as a name server.

Answer: D Explanation:



QUESTION 27 Your network contains an Active Directory domain named contoso.com. The domain contains two member servers named Server1 and Server2. All servers run Windows Server 2012 R2. Server1 and Server2 have the Failover Clustering feature installed. The servers are configured as nodes in a failover cluster named Cluster1. You add two additional nodes to Cluster1. You need to ensure that Cluster1 stops running if three nodes fail. What should you configure? A. Affinity - None B. Affinity - Single C. The cluster quorum settings D. The failover settings E. A file server for general use F. The Handling priority G. The host priority H. Live migration I. The possible owner J. The preferred owner K. Quick migration L. The Scale-Out File Server

Answer: C Explanation: <http://technet.microsoft.com/en-us/library/cc731739.aspx>

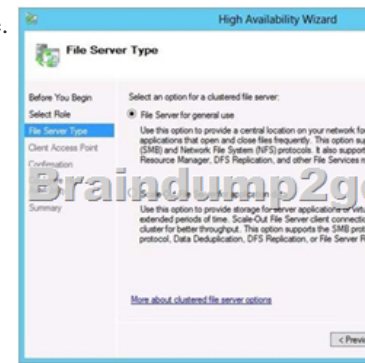
The quorum configuration in a failover cluster determines the number of failures that the cluster can sustain. If an additional failure occurs, the cluster must not contain a copy of the cluster configuration or file share witness. It is essential that the cluster stop running if too many failures occur or if there is a problem in the topic.

Q
U
E
S
T
I
O
N

2
8

Your network contains an Active Directory domain named contoso.com. The domain contains two member servers named Server1 and Server2. All servers run Windows Server 2012 R2. Server1 and Server2 have the Failover Clustering feature installed. The servers are configured as nodes in a failover cluster named Cluster1. You add two additional nodes in Cluster1. You have a folder

named Folder1 on Server1 that hosts Application data. Folder1 is a folder target in a Distributed File System (DFS) namespace. You need to provide highly available access to Folder1. The solution must support DFS Replication to Folder1. What should you configure? A. Affinity - None B. Affinity - Single C. The cluster quorum settings D. The failover settings E. A file server for general use F. The Handling priority G. The host priority H. Live migration I. The possible owner J. The preferred owner K. Quick migration L. The Scale-Out File Server Answer: E Explanation: EXAM TIP Learn the limitations of SoFS well. Don't be tricked into selecting SoFS as the file server type for a new clustered file server just because the question states it will host Application data. If the file server is also used with incompatible features (such as BranchCache, DFS, or File Server Resource Manager), or if no CSVs are available, you must choose File Server For General Use as the file server type.



QUESTION 29 Your network contains an Active Directory domain named contoso.com. The domain contains two member servers named Server1 and Server2. All servers run Windows Server 2012 R2. Server1 and Server2 have the Failover Clustering feature installed. The servers are configured as nodes in a failover cluster named Cluster1. You configure File Services and DHCP as clustered resources for Cluster1. Server1 is the active node for both clustered resources. You need to ensure that if two consecutive heartbeat messages are missed between Server1 and Server2, Server2 will begin responding to DHCP requests. The solution must ensure that Server1 remains the active node for the File Services clustered resource for up to five missed heartbeat messages. What should you configure? A. Affinity - None B. Affinity - Single C. The cluster quorum settings D. The failover settings E. A file server for general use F. The Handling priority G. The host priority H. Live migration I. The possible owner J. The preferred owner K. Quick migration L. The Scale-Out File Server Answer: D Explanation:

<http://social.technet.microsoft.com/Forums/en/operationsmanagergeneral/thread/6b6acdf3e921-4c9f-b496-cd81f556d246>

QUESTION 30 Your network contains a server named Server1 that runs Windows Server 2012 R2. Server1 has the Print and Document Services server role installed. You connect a new print device to the network. The marketing department and the sales department will use the print device. You need to provide users from both departments with the ability to print to the network print device. The solution must ensure that if there are multiple documents queued to print, the documents from the sales users print before the documents from the marketing users. What should you do on Server1? A. Add one printer. Modify the printer priority and the security settings. B. Add two printers. Modify the priorities of each printer and the security settings of each printer. C. Add two printers and configure printer pooling. D. Add one printer and configure printer pooling. Answer: B Explanation:

http://wiki.answers.com/Q/How_do_you_set_different_print_priority_for_different_users How do you set different print priority for different users? To set different print priority to different groups Open Printers and Faxes. Right-click the printer you want to set, click Properties, and then click the Advanced tab. In Priority, click the up or down arrows, and then click OK. Or, type a priority level, where 1 is the lowest level and 99 is the highest, and then click OK. Click Add Printer to add a second logical printer for the same physical printer. For instructions. Click the Advanced tab. In Priority, set a priority higher than that of the first logical printer. Instruct the regular group of users to use the first logical printer name and the group with higher priority to use the second logical printer name. Set the appropriate permissions for the different groups. NB:

<http://technet.microsoft.com/en-us/library/cc757086%28v=ws.10%29.aspx> Creating a printing pool You can create a printing pool to automatically distribute print jobs to the next available printer. A printing pool is one logical printer connected to multiple printers through multiple ports of the print server. The printer that is idle receives the next document sent to the logical printer. This is useful in a network with a high volume of printing because it decreases the time users wait for their documents. A printing pool also simplifies administration because multiple printers can be managed from the same logical printer on a server. With a printing pool created, the user prints a document without having to find out which printer is available. The logical printer checks for an available port and sends documents to ports in the order that they are added. Adding the port connected to the fastest printer first ensures that documents are sent to the printer that can print the fastest before they are routed to slower printers in the printing pool. Before setting

a printing pool, consider the following: All printers in a pool must use the same driver. Because users will not know which printer in the pool prints a given document, make sure all printers in the pool are located in the same place. QUESTION 31 Your network contains an Active Directory domain named contoso.com. The domain contains a domain controller named DC5. DC5 has a Server Core Installation of Windows Server 2012 R2. You need to uninstall Active Directory from DC5 manually. Which tool should you use? A. The ntdsutil.exe command B. The dcpromo.exe command C. The Remove-WindowsFeature cmdlet D. The Remove-ADComputer cmdlet Answer: A Explanation: The correct Powershell cmdlet would be Uninstall-AddsDomainController. https://technet.microsoft.com/en-us/library/jj574104.aspx#BKMK_PS However, since that is not an option, you are left with ntdsutil. Also, the question states that it must be done ?manually?, and ntdsutil is a very manual tool. !!!RECOMMEND!!! 1. | 2016/10 Latest 70-417 Exam Dumps (PDF & VCE) 612 Q&As Download: <http://www.braindump2go.com/70-417.html> 2. | 2016/10 Latest 70-417 Exam Questions & Answers: https://drive.google.com/folderview?id=0B9YP8B9sF_gNNI9VMTNzakiUbGc&usp=sharing