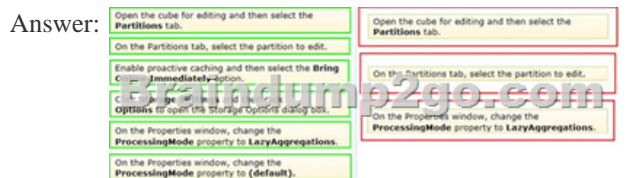


[Oct.-2016-NEW100% Real Exam Questions-Microsoft 70-466 Exam VCE Dumps 186Q&As Download[NQ23-NQ28

2016/10 New Microsoft 70-466: Implementing Data Models and Reports with Microsoft SQL Server Exam Questions Updated Today! Free Instant Download 70-466 Exam Dumps (PDF & VCE) 186Q&As from Braindump2go.com Today! 100% Real Exam Questions! 100% Exam Pass Guaranteed! 1. | 2016/10 70-466 Exam Dumps (PDF & VCE) 186Q&As Download:

<http://www.braindump2go.com/70-466.html> 2. | 2016/10 70-46 Exam Questions & Answers:

<https://drive.google.com/folderview?id=0B75b5xYLjSSNfjdMb2txSGJsT3V3cDFiaFpzdnndqaVBuVWcyWnhFNWdoQ1h1N1FSVTBWU1E&usp=sharing> QUESTION 23 You are deploying an update to a SQL Server Analysis Services (SSAS) cube to a production environment. The production database has been configured with security roles. You need to preserve the existing security roles in the production database. Database roles and their user accounts from the development environment must not be deployed to the production server. Which deployment method should you use? A. Use the SQL Server Analysis Services Deployment Wizard. B. Backup and restore the database. C. Deploy the project from SQL Server Data Tools to the production server. D. Use the SQL Server Analysis Services Migration Wizard. Answer: A QUESTION 24 Drag and Drop Questions You are developing a SQL Server Analysis Services (SSAS) multidimensional project that is configured to source data from a SQL Azure database. The cube is processed each night at midnight. The largest partition in the cube takes 12 hours to process, and users are unable to access the cube until noon. The partition must be available for querying as soon as possible after processing commences. You need to ensure that the partition is available for querying as soon as possible, without using source data to satisfy the query. Which three actions should you perform in sequence? (To answer, move the appropriate actions from the list of actions to the answer area and arrange them in the correct order.)



Explanation:- Processing mode has two possible options. Regular. This is the default setting. When set to regular, partitions will be available to users after data has been loaded and aggregations are created completely. Lazy Aggregations. When set to lazy aggregations, partitions will be available to user queries immediately after data has been loaded. Aggregations will be created as a separate background process while users start to query the partition. - Lazy processing performs the task of building indexes and aggregations for dimensions and measure group partitions at a lower priority to reduce foreground processing time and to allow users to query the cube sooner. For lazy processing to occur, you must switch the ProcessingMode = LazyAggregations of your measure group partitions; by default this value is Regular (lazy processing is turned off). When processing a dimension with flexible aggregations such as parent-child or virtual dimension by using the processing enumeration of ProcessUpdate (such as to take into account of member name or hierarchy changes), lazy processing is initiated to ensure that the aggregations are rebuilt on the associated measure group partitions. - Configure Lazy Processing for the cube, measure group, or partition. If you configure Lazy Processing, the dropped aggregations are recalculated as a background task. While the flexible aggregations are being recalculated, users can continue to query the cube (without the benefit of the flexible aggregations). While the flexible aggregations are being recalculated, queries that would benefit from the flexible aggregations run slower because Analysis Services resolves these queries by scanning the fact data and then summarizing the data at query time. As the flexible aggregations are recalculated, they become available incrementally on a partition-by-partition basis. For a given cube, Lazy Processing is not enabled by default. You can configure it for a cube, measure group, or partition by changing the ProcessingMode property from Regular to LazyAggregations. To manage Lazy Processing, there are a series of server properties such as the LazyProcessing MaxObjectsInParallel setting, which controls the number of objects that can be lazy processed at a given time. By default it is set to 2. By increasing this number, you increase the number of objects processed in parallel; however, this also impacts query performance and should therefore be handled

with care.- Incorrect: With Bring Online Immediately enabled, during cache refresh all queries are directed to the relational source database to retrieve the latest data for end users. While this provides users with refreshed data, it can also result in reduced query performance given that Analysis Services needs to redirect queries to the relational source database. QUESTION 25Hotspot QuestionYou are designing a dimension named Employee for a SQL Server Analysis Services multidimensional project. The Employee dimension contains a DateOfBirth attribute and a MaritalStatus attribute. You need to minimize the amount of time required to process the cube. What should you do? To answer, select the appropriate relationship type for each attribute in the answer area.

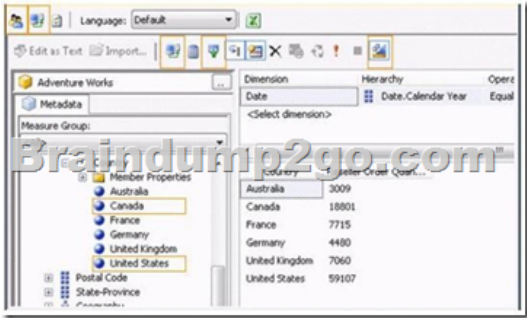
Answer Area

Attribute	Relationship type
DateOfBirth	<div><div></div><div>Fixed</div><div>Rigid</div></div>
MaritalStatus	<div><div></div><div>Fixed</div><div>Flexible</div><div>Rigid</div></div>

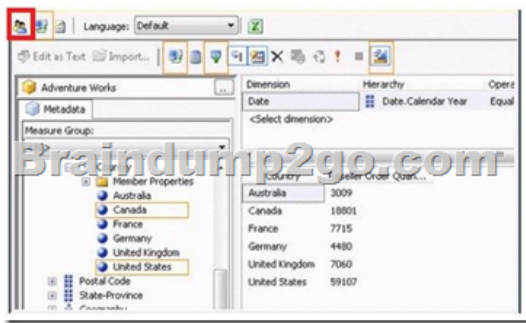
Answer: **Answer Area**

Attribute	Relationship type
DateOfBirth	<div><div></div><div>Fixed</div><div>Rigid</div></div>
MaritalStatus	<div><div></div><div>Fixed</div><div>Flexible</div><div>Rigid</div></div>

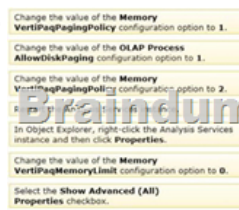
QUESTION 26You are modifying a SQL Server Analysis Services (SSAS) multidimensional database. You have identified a dimension that is no longer used by any cubes. You need to delete the dimension. What should you do? A. Write a T-SQL command to drop the dimension from the database.B. Script the deletion of the dimension as an XMLA command for execution against the production model.C. Use the SQL Server Analysis Services Migration Wizard.D. Deploy the project from the development environment by using SQL Server Management Studio. Answer: B QUESTION 27Hotspot QuestionA SQL Server Analysis Services (SSAS) cube has roles to define dimension data security. A role named USA allows users to browse data pertaining to the United States. A role named Canada allows users to browse data pertaining to Canada.A user can browse sales data pertaining to the United States but cannot browse sales data pertaining to Canada. You validate that the user belongs to the USA and Canada roles. You need to reproduce the issue in SQL Server Management Studio (SSMS). Which option should you select? To answer, select the appropriate action in the answer area.



Answer:



QUESTION 28 Drag and Drop Questions You install a SQL Server Analysis Services (SSAS) instance in tabular mode on a server. While processing a very large tabular model, you receive an out-of-memory error. You identify that the amount of physical memory in the server is insufficient. Additional physical memory cannot be installed in the server. You need to configure the server to allow paging to disk by using the operating system page file (pagefile.sys). Which four actions should you perform in sequence? (To answer, move the appropriate actions from the list of actions to the answer area and arrange them in the correct order.)



Answer:



Explanation:- View or set configuration properties in Management Studio In Object Explorer, right-click the Analysis Services instance, and then click Properties. The General page appears, displaying the more commonly used properties. Modifying server properties is supported only for tabular mode and multidimensional mode servers. If you installed PowerPivot for SharePoint, always use the default values unless you are directed otherwise by a Microsoft product support engineer.- VertiPaqPagingPolicy Specifies the paging behavior in the event the server runs low on memory. Valid values are as follows:Zero (0) is the default. No paging is allowed. If memory is insufficient, processing fails with an outof-memory error.1 enables paging to disk using the operating system page file (pagefile.sys). When VertiPaqPagingPolicy is set to 1, processing is less likely to fail due to memory constraints because the server will try to page to disk using the method that you specified. Setting the VertiPaqPagingPolicy property does not guarantee that memory errors will never happen. Out of memory errors can still occur under the following conditions:There is not enough memory for all dictionaries. During processing, Analysis Services locks the dictionaries for each column in memory, and all of these together cannot be more than the value specified for VertiPaqMemoryLimit.There is insufficient virtual address space to accommodate the process. To resolve persistent out of memory errors, you can either try to redesign the model to reduce the amount of data that needs processing, or you can add more physical memory to the computer.Applies to tabular server mode only.- Incorrect: VertiPaqMemoryLimitIf paging to disk is allowed, this property specifies the level of memory consumption (as a percentage of total memory) at which paging starts. The default is 60. If memory consumption is less than 60 percent, the server will not page to disk.This property depends on the VertiPaqPagingPolicyProperty, which must be set to 1 in order for paging to occur. Applies to tabular server mode only.Reference: Memory Properties; Configure Server Properties in Analysis Services !!!RECOMMEND!!! 1.[2016/10 70-466 Exam Dumps (PDF & VCE) 186Q&As Download: <http://www.braindump2go.com/70-466.html> 2.[2016/10 70-46 Exam Questions & Answers: <https://drive.google.com/folderview?id=0B75b5xYLjSSnfjdMb2txSGJsT3V3cDFiaFpzndndqaVBUVWcyWnhFNWdoQ1h1N1FSV TBWU1E&usp=sharing>