

New Updated Microsoft 70-466 Practice Tests Questions Offered By Braindump2go Guarantee You A 100% Full Success (131-140)

Do you want to pass Microsoft 70-466 Exam ? If you answered YES, then look no further. Braindump2go offers you the best 70-466 exam questions which cover all core test topics and certification requirements. All REAL questions and answers from Microsoft Exam Center will help you be a 70-466 certified! Vendor: Microsoft Exam Code: 70-466 Exam Name: Implementing Data Models and Reports with Microsoft SQL Server 2014 Exam

Compared Before Buying Microsoft 70-466 PDF & VCE!		
Pass4sure	Braindump2go	TestKing
	100% Pass OR Money Back	
Not In Stock	186 Q&As	50 Q&As
/	\$99.99	\$124.99
/	Coupon Code: BDNT2014	/

QUESTION 131 You are developing a new SQL Server Reporting Services (SSRS) report in SQL Server Data Tools (SSDT). This report has a table named Table1 and a textbox named Textbox1. Table1 is initially visible but the user must be able to choose when to hide it. You need to develop the report to meet the requirement. What should you do? (More than one answer choice may achieve the goal. Select the BEST answer.) A. Add a parameter to the report so users can choose the display state of Table1. B. For the properties of Table1, configure the Display can be toggled by this report item option to use Textbox1. C. Configure Textbox1 to drill through to rerun the report to toggle the display of Table1. D. For the properties of Table1, configure the Display can be toggled by this report item option to use Table1. Answer: B

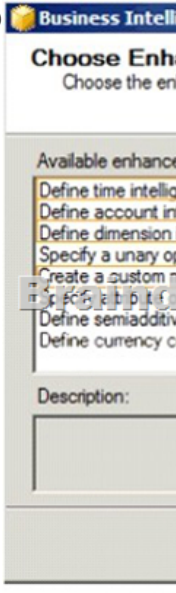
QUESTION 132 A large manufacturing company has manufacturing plants in many states. Each state has a dedicated SQL Server instance that stores its manufacturing data. Each SQL Server instance is configured identically and all instances have identical database structures. You are developing a daily report that summarizes information on manufacturing activity. The report has the following requirements:- It must have a state name as one of the report parameters. - It must provide a daily summary of manufacturing activity of a selected state. - It must require minimal development and maintenance effort. You need to develop the report to meet the requirements. What should you do? (More than one answer choice may achieve the goal. Select the BEST answer.) A. Use a shared data source that defines an expression-based connection string based on the state parameter. B. Build a centralized data repository, schedule a regular Extract, Transform, and Load (ETL) process on all manufacturing data, and then use the repository to generate the report. C. Use a report-specific data source that defines an expression-based connection string based on the state parameter. D. Build one report for each state and instruct users to execute reports as needed. Answer: C

QUESTION 133 You manage a SQL Server Reporting Services (SSRS) instance. An application must pass credentials to the local security authority for Reporting Services. You need to configure Reporting Services to issue a challenge/response when a connection is made without credentials. Which authentication type should you configure in the RSReportServer.config file? A. RSWindowsNTLMB. RSWindowsBasicC. RSWindowsKerberosD. RSWindowsNegotiate Answer: B Explanation: <http://msdn.microsoft.com/en-us/library/ms157273.aspx>

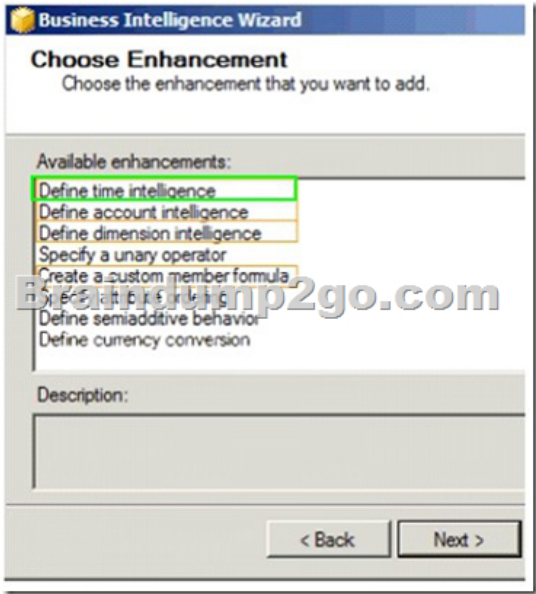
QUESTION 134 You maintain a multidimensional Business Intelligence Semantic Model (BISM) that was developed with default settings. The model has one cube and the cube has one measure group. The measure group is based on a very large fact table and is partitioned by month. The fact table is incrementally loaded each day with approximately 800,000 new rows. You need to ensure that all rows are available in the cube while minimizing the processing time. Which processing option should you use? A. Process AddB. Process ClearC. Process DefaultD. Process IndexE. Process DataF. Process Full Answer: A

QUESTION 135 You are developing a tabular Business Intelligence Semantic Model (BISM) database based on a SQL Server database. In the data source, the FactInternetSales table is partitioned by month. Data from the current month has been updated and new data has been inserted in the FactInternetSales table, in the DimProduct table, and in the DimCustomer table. In the model, the FactInternetSales table is also partitioned by month. You need to ensure that the model has the most recent data while minimizing the processing time. What should you do? A. Process the latest FactInternetSales model table partition, the DimProduct table, and the DimCustomer table with the Process Defrag processing option. Then process the database with the Process Recalc processing option. B. Process the latest FactInternetSales model table partition, the DimProduct table, and the DimCustomer table with the Process Clear processing option. Then process the database with the Process Data processing option. C. Process the latest FactInternetSales model table partition, the DimProduct table, and the DimCustomer table with the Process Data processing option. Then process the database with the Process Defrag processing option. D. Process the latest FactInternetSales model table partition, the DimProduct table, and the DimCustomer table with the Process Clear processing option. Then process the database with the Process Full processing option. E. Process the latest

FactInternetSales model table partition, the DimProduct table, and the DimCustomer table with the Process Data processing option. Then process the database with the Process Recalc processing option. Answer: C QUESTION 136 You are designing a SQL Server Analysis Services (SSAS) cube based on a Windows Azure SQL Database data warehouse. You need to implement a degenerate dimension. What should you do? A. Use the fact table as the data source for the dimension. B. Create a junk dimension table based on the fact table in the data source. C. Create snowflake dimension tables based on normalized views of the fact table in the data source. D. Add a surrogate key to the fact table and use it as the degenerate dimension key. Answer: A QUESTION 137 Hotspot Question A sales cube contains two years of data. The sales team must see year-over-year (YOY) and month-over-month (MOM) sales metrics. You need to modify the cube to support the sales team's requirements. Which Business Intelligence Wizard enhancements should you use? (To answer, configure the appropriate option or options in the dialog box in the answer area.)



Answer:



QUESTION 138 You are restructuring an existing cube. One of the measures in the cube is Amount. The Sum aggregation function is used for the Amount measure. The cube includes a dimension named Account and the dimension's Type property is set to Accounts. The Account dimension includes an account type attribute. You need to ensure that the Amount measure aggregates correctly according to the account type classification. Development effort must be minimized. What should you do? (More than one answer choice may achieve the goal. Select the BEST answer.) A. Add the ByAccount attribute to the account dimension. B. Use SQL Server Data Tools to change the AggregateFunction property value of the Amount measure to ByAccount. C. Develop a .NET application that uses Analysis Management Objects (AMO) to change the existing AggregateFunction property value of the Amount measure to ByAccount and then use the application. D. Develop a .NET application that uses Analysis Management Objects

(AMO) to change the existing AggregateFunction property value of the Amount measure to FirstNonEmpty and then use the application. Answer: B QUESTION 139 You develop a SQL Server Analysis Services (SSAS) tabular project. The tabular model loads data from a SQL Server 2012 relational database each day. You define a connection. You need to ensure that the connection minimizes the attack surface area of the server. How should you define the impersonation information for the connection? (More than one answer choice may achieve the goal. Select the BEST answer.) A. Use the credentials of the SQL Server Analysis Services (SSAS) service account. Grant least privilege to this account in the source database. B. Use your domain credentials. Grant least privilege to your account in the source database. C. Create and use a new Windows domain account. Grant least privilege to this account in the source database. D. Use SQL Server authentication. Answer: C QUESTION 140 You are developing a SQL Server Analysis Services (SSAS) tabular project. A model defines a measure named Profit and includes a table named Date. The table includes year, semester, quarter, month, and date columns. The Date column is of data type Date. The table contains a set of contiguous dates. You need to create a measure to report on year-over-year growth of profit. What should you do? (Each answer presents a complete solution. Choose all that apply.)

☐ A. Define the following calculation.

```
Year Over Year Revenue Growth:=[Revenue] - CALCULATE([Revenue],
SAMEPERIODLASTYEAR('Date'[Date]))
```

☐ B. Define the following calculation.

```
Year Over Year Revenue Growth:=[Revenue] - CALCULATE([Revenue], DATEADD('Date'[Date], 1, YEAR))
```

☐ C. Use the Business Intelligence Wizard and then use the **Define time intelligence** enhancement.

☐ D. Define the following calculation.

```
Year Over Year Revenue Growth:=[Revenue] - CALCULATE([Revenue],
PARALLELPERIOD('Date'[Date], -12, MONTH))
```

A. Option AB. Option BC. Option CD. Option D Answer: ACD For those who feel the overwhelming anxiety before their 70-466 exam, Braindump2go Latest updated 70-466 Exam Dumps will help you Pass 100% in a short time preparation! 70-466 Exam Dumps PDF & VCE Full Version Instant Download!

Compared Before Buying Microsoft 70-466 PDF & VCE!		
Pass4sure	Braindump2go	TestKing
	100% Pass OR Money Back	
Not In Stock	186 Q&As	50 Q&As
/	\$99.99	\$124.99
/	Coupon Code: BDNT2014	/

<http://www.braindump2go.com/70-466.html>