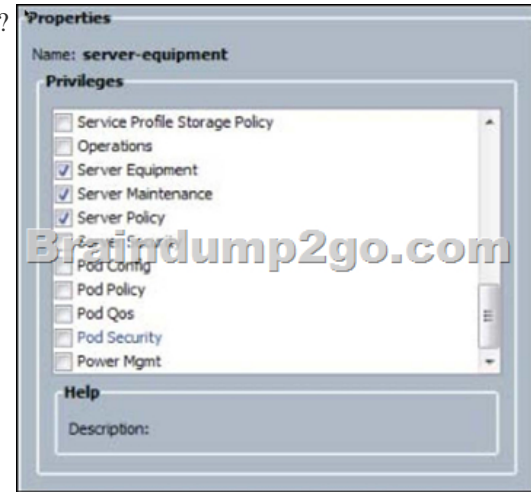


## [NEW-642-035-Dumps Valid Braindump2go Cisco 642-035 VCE Dumps & 642-035 PDF Dumps 175q Offer[69-80]

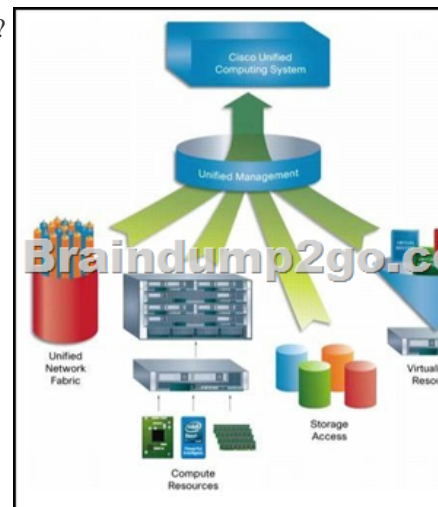
2016/12 New Cisco 642-035: Troubleshooting Cisco Unified Computing (DCUCT) Exam Questions Updated Today! Free Instant Download 642-035 Exam Dumps (PDF & VCE) 175Q&As from Braindump2go.com Today! 100% Real Exam Questions! 100% Exam Pass Guaranteed! 1. | 2016/12 New 642-035 Exam Dumps (PDF & VCE) 175Q&As Download:

<http://www.braindump2go.com/642-035.html> 2. | 2016/12 New 642-035 Exam Questions & Answers:

<https://1drv.ms/f/s!AvI7wzKf6QBjgTXBG4XYyqC6-T8u> QUESTION 69 Which statement is true about system event logs? A. By default, they require manual clearing. B. They report operating system crashes and errors. C. They are also referred to as system error logs. D. They can only be accessed from Cisco UCS Manager. Answer: A QUESTION 70 Which two types of ports does end host mode switching have? (Choose two.) A. VSSB. borderC. routerD. serverE. STPF. client Answer: BD QUESTION 71 In a Cisco UCS environment, what are the three power types in a power policy? (Choose three.) A. backupB. gridC. redundD. n-plus-1E. non-redundF. plus-1 Answer: BDE QUESTION 72 When a service profile is disassociated from a server, what happens to the identity and connectivity information for the server? A. It is cleared and set to the default that was setup initially by the first configuration. B. It is maintained and can be reused. C. It is reset to factory defaults. D. It uses master service profile parameters. E. It takes parameters of other servers in the service profile. Answer: C QUESTION 73 At any given time, each server can be associated with how many service profiles? A. 1B. 2C. 5D. 10E. unlimited Answer: A QUESTION 74 Refer to the exhibit. Using RBAC for security in a Cisco UCS environment, what is seen in the exhibit?



A. custom roleB. default roleC. LDAP group mapD. external service profile Answer: B QUESTION 75 Refer to the exhibit. Which of these is an extension of the virtual machine abstraction that is applied to physical servers?



A. service profileB. compute profileC. organization profileD. locale profileE. role profile Answer: A QUESTION 76 In new Cisco UCS release 2.0 installations, what are the default VLAN IDs? A. Ethernet VLAN default ID is 4048, FCOE default VLAN ID 4048B. Ethernet VLAN default ID is 1, FCOE default VLAN ID is 3968C. Ethernet VLAN default ID is 1, FCOE

default VLAN ID is 2D. Ethernet VLAN default ID is 2, FCOE default VLAN ID is 4047E. Ethernet VLAN default ID is 1, FCOE default VLAN ID is 4048 Answer: E QUESTION 77If a server is not associated with a service profile, the activated firmware remains pending. Which two steps should you take? (Choose two.) A. Manually reboot the server.B. Reset the server to a new profile.C. Reset the unassociated server to activate the firmware.D. Reinitialize the firmware process with Cisco UCS Manager.E. Download the firmware and start over.F. Shut down gracefully and start over. Answer: AC QUESTION 78After migrating a server that is configured with dynamic vNICs, Cisco UCS Manager assigns new dynamic vNICs to the server. If you had been monitoring traffic on an original dynamic vNIC, what must you do when the server comes back up?" A. Reassign the dynamic vNIC back to the old configuration.B. Nothing; Cisco UCS Manager will take over.C. Reassign the service profile back to the master one.D. Remove and reconfigure the dynamic vNIC.E. Reassign the monitoring source. Answer: E QUESTION 79 Which two Cisco Nexus 2000-Series Fabric Extenders support connections to both Cisco Nexus 5000 Series Switches and Cisco Nexus 7000 Series Switches? (Choose two.) A. Cisco Nexus 2248TPB. Cisco Nexus 2248TP-EC. Cisco Nexus 2232PPD. Cisco Nexus 2232TM Answer: AC QUESTION 80UCS-A# scope eth-uplinkUCS-A /eth-uplink # scope fabric aUCS-A /eth-uplink/fabric # scope interface 2 3UCS-A /eth-uplink/fabric/interface # create mon-src Monitor23 UCS-A /eth-uplink/fabric/interface/mon-src\* # set direction receive UCS-A /eth-uplink/fabric/interface/mon-src\* # commit-buffer What does the command scope interface 2 3 in the above CLI command sequence do on a Cisco UCS blade server? A. enters the interface command mode for the specified uplink portB. enters the interface command mode for the specified Fabric AC. enters the interface command mode for the specified Fabric BD. enters slot 3 port 2 specified uplink port Answer: A !!!RECOMMEND!!! 1.Braindump2go|2016/12 New 642-035 Exam Dumps (PDF & VCE) 175Q&As Download: <http://www.braindump2go.com/642-035.html> 2.Braindump2go|2016/12 New 642-035 Study Guide: YouTube Video: [YouTube.com/watch?v=xDvSONx77Nw](https://www.youtube.com/watch?v=xDvSONx77Nw)