

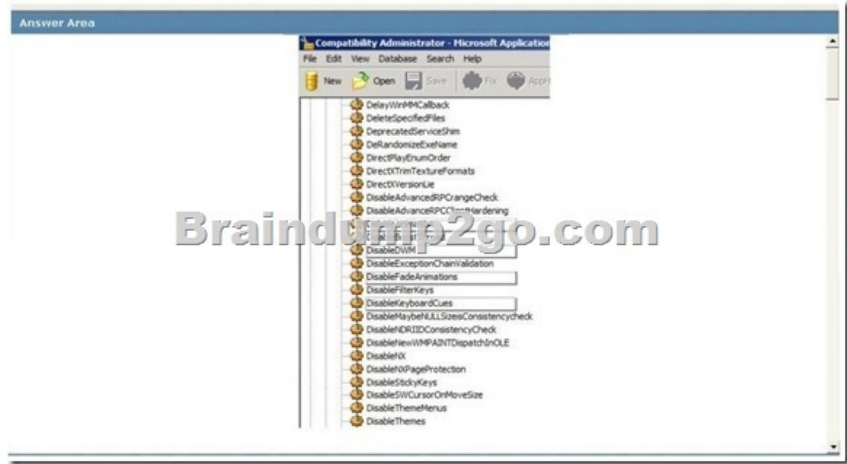
Microsoft 70-686 Exam Dumps From Braindump2go Covers The Latest Knowledge Points From Microsoft Exam Centre (71-80)

The 70-686 Exam Practice Questions and Answers are ideal for the aspiring candidates to grab exceptional grades in Microsoft 70-686 Exam! The 70-686 Questions and Answers are developed using the latest updated course content and all the answers are verified to ensure phenomenal preparation for the actual 70-686 Exam! Vendor: Microsoft Exam Code: 70-686 Exam Name: Pro: Windows 7, Enterprise Desktop Administration

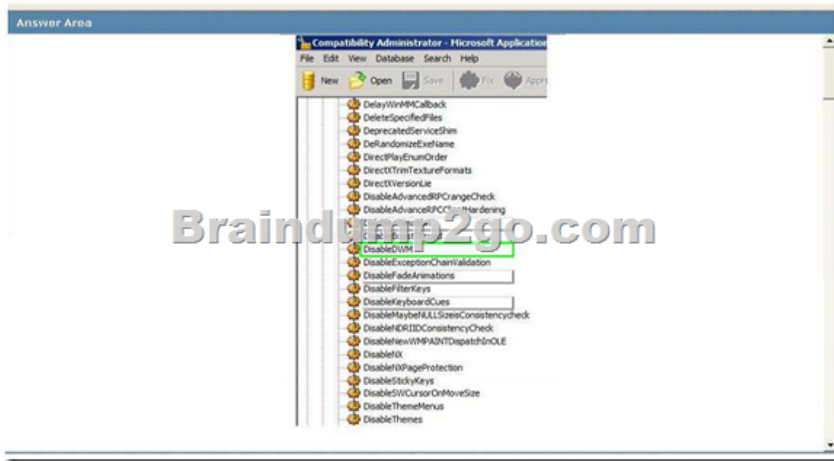
Compared Before Buying Microsoft 70-686 PDF & VCE!		
Pass4sure	Braindump2go	TestKing
	100% Pass OR Money Back	
Not In Stock	200 Q&As	48 Q&As
/	\$99.99	\$99.99
/	Coupon Code: BDNT2014	No Discount

QUESTION 71A company uses Microsoft Deployment Toolkit (MDT) 2010 to deploy Windows 7 Enterprise and Microsoft Office 2010. The company is replacing existing computers with new 64-bit computers. You have the following requirements:- You need to include Office 2010 with the deployment.- You need to automate the deployment where possible.- Some employees have accessibility requirements that require specialized hardware.- The hardware must continue to be used after the deployment.- The specialized hardware is compatible with Windows 7 but only 32-bit drivers are available from the manufacturer. You need to create an image that meets these requirements. What should you do? (Choose all that apply.) A. Import the Windows 7 Enterprise x86 source files. B. From the MDT deployment workbench, select the Custom Task Sequence template. C. Use a reference computer and capture a WIM image. D. From the MDT deployment workbench, select the Sysprep and Capture template. E. Import the necessary OEM drivers. F. Import the 32-bit version of Office 2010. G. Import the 64-bit version of Office 2010. H. Import the Windows 7 Enterprise x64 source files. Answer: ABEF Explanation: hints: The specialized hardware is compatible with Windows 7 but only 32-bit drivers are available from the manufacturer. QUESTION 72 Your company's network includes a main office and several branch offices. The branch offices are connected to the main office by high-latency links. All client computers run Windows 7 Enterprise, and all servers run Windows Server 2008 R2. Servers are located in each of the branch offices. Client computers in the branch offices frequently access a specific group of files on a file server named Server1. These access requests consume significant amounts of bandwidth and reduce the speed of higher-priority traffic. You need to reduce the bandwidth that is consumed by requests for frequently accessed files. What should you do? A. Configure BranchCache in Hosted Cache mode on client computers in the main office and the branch offices. B. Configure BranchCache in Distributed Cache mode on client computers in the main office and the branch offices. C. Enable the BranchCache For Network Files role service on Server1. Configure BranchCache in Distributed Cache mode on a server computer in only the branch offices. D. Enable the BranchCache For Network Files role service on Server1. Configure BranchCache in Hosted Cache mode on a server computer in only the branch offices. Answer: C Explanation: BranchCache? is designed to reduce WAN link utilization and improve application responsiveness for branch office workers who access content from servers in remote locations. Branch office client computers use a locally maintained cache of data to reduce traffic over a WAN link. The cache can be distributed across client computers (Distributed Cache mode) or can be housed on a server in the branch (Hosted Cache mode). Distributed Cache mode If client computers are configured to use Distributed Cache mode, the cached content is distributed among client computers on the branch office network. No infrastructure or services are required in the branch office beyond client computers running Windows 7. Hosted Cache mode In hosted cache mode, cached content is maintained on a computer running Windows Server 2008 R2 on the branch office network. hints: no server are located in the branch office. [http://technet.microsoft.com/en-us/library/dd637832\(v=ws.10\).aspx](http://technet.microsoft.com/en-us/library/dd637832(v=ws.10).aspx) QUESTION 73 A Windows Server 2008 R2 server named SERVER01 has the Windows Deployment Services (WDS) role installed. SERVER02 is running DHCP services. You prestage computer objects in Active Directory. You plan to use WDS to deploy Windows 7 to the prestaged computers. When you try to deploy an image by using PXE, the process fails. You need to ensure that SERVER01 responds to prestaged client computers only. From WDS, what should you do? (Choose all that apply.) A. On the DHCP tab, select Configure DHCP option 60 to indicate that this server is also a PXE server. B. On the Advanced tab, select Authorize this Windows Deployment Services server in DHCP. C. On the PXE Response tab, select Respond to all client computers (known and unknown). D. On the DHCP tab, select Do not listen on Port 67. E. On the PXE Response tab, select Respond only to known client computers. F. On the Advanced tab, select Do not authorize this Windows Deployment Services server in DHCP. Answer: BE Explanation: hints: prestaged computers = known

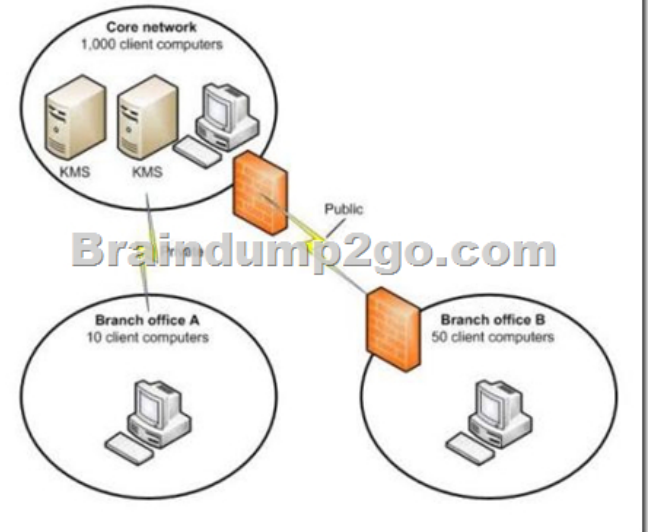
client computers QUESTION 74 You are preparing to install a 32-bit legacy application on all client computers in an organization. The application requires specific compatibility settings in order to function in Windows 7. You run the 32-bit version of Compatibility Administrator and create a new application fix. You need to create a shim database that includes a compatibility fix for applications that have known issues with the Desktop Window Manager. Which compatibility modes should you select? To answer, select the appropriate setting in the work area.



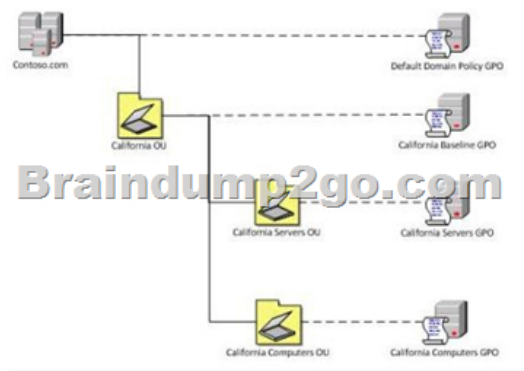
Answer:



QUESTION 75 Your company's network is shown in the following diagram. There is a VPN between Branch Office B and the Core Network. The company plans to deploy Windows 7 to all client computers. You need to manage the deployment to ensure that client computers in branch office A and in branch office B can activate Windows. What should you do? (Each correct answer presents part of the solution. Choose all that apply.)



A. Configure DNS so that client computers in branch office A use the Key Management Service (KMS) in the core network. B. Deploy the Key Management Service (KMS) in branch office B. C. Deploy the Key Management Service (KMS) in branch office A. D. Configure DNS so that client computers in branch office B use the Key Management Service (KMS) in the core network.
Answer: AB QUESTION 76 Your company has an Active Directory Domain Services (AD DS) forest with a single domain named contoso.com. You deploy a new Group Policy object (GPO) named California Computers GPO as part of the organizational unit (OU) and GPO design shown in the following diagram.



The California Computers GPO contains computer configuration settings and user configuration settings. User configuration settings are not being applied to users who log on to client computers in the California Computers OU. Which GPO setting should you select?? (To answer, drag the appropriate setting from the list of settings to the correct location or locations in the work area.)

Answer Choices
WMI filter
Delete GPO
Block inheritance
Enable loopback processing

Answer:

Answer Choices	Answer Area
WMI filter	<p>Enable loopback processing</p>
Delete GPO	
Block inheritance	
Enable loopback processing	

QUESTION 77 Your company has a custom Web application that uses a self-signed SSL certificate. The company has an internal certification authority (CA) and uses autoenrollment. When external users attempt to start the Web application, Internet Explorer displays an error message that recommends closing the Web page rather than continuing to the application. You need to ensure that Internet Explorer does not display the error message. What should you do? A. Install the current certificate into the personal store on each client computer. Add the applications URL to the Trusted Sites zone in Internet Explorer. B. Install the current certificate into the computer store on each client computer. C. Purchase and install a commercial certificate on the CA server. Ensure that users trust the issuing CA. D. Issue a root certificate from the internal CA on the external users computers. Answer: B QUESTION 78 You are deploying an App-V client application to the New York office. You need to ensure that the application will be installed at a specific time. What should you use to deploy the application? A. ConfigMgr B. a Group Policy object (GPO) with a software installation policy. C. MED-VD. Microsoft Deployment Toolkit Answer: A QUESTION 79 Your company has client computers that run Windows 7 Enterprise. Each computer in the company is required to boot into a different Windows 7 application environment without compromising the main Windows 7 Enterprise installation. You need to create a new Native Boot VHD that

will host the alternate Windows 7 environments. Which command should you use? A. BCDEdit.exe B. Bootcfg.exe C.

DiskPart.exe D. BCDboot.exe Answer: D Explanation:

<http://www.techexams.net/forums/windows-7-exams/66547-bcdedit-bcdboot-difference.html> BCDboot is a tool used to quickly set up a system partition, or to repair the boot environment located on the system partition. The system partition is set up by copying a small set of boot environment files from an installed Windows® image. BCDboot also creates a Boot Configuration Data (BCD) store on the system partition with a new boot entry that enables you to boot to the installed Windows image. BCDEdit is a command-line tool for managing BCD stores. It can be used for a variety of purposes, including creating new stores, modifying existing stores, adding boot menu parameters, and so on. BCDEdit serves essentially the same purpose as Bootcfg.exe on earlier versions of Windows, but with two major improvements

QUESTION 80 Your company has a single Active Directory Domain Services (AD DS) domain and 1,000 Windows 7 computers. You are planning to deploy a custom application. You need to schedule the deployment to occur outside of business hours and without user interaction. What should you do? (Choose all that apply.) A. Create a collection with the required computers and assign the software to the collection. B. Create a software installation Group Policy object (GPO). C. Assign the policy to the root of the Active Directory Domain Services (AD DS) domain. D. Create a software deployment package by using System Center Configuration Manager 2007. E. Create an unattend.xml file. F.

Create a silent install MSI file. Answer: A D Explanation: hints: without user interaction = silent install MSI file 100% 70-686 Complete Success & Money Back Guarantee! By utilizing Braindump2go high quality Microsoft 70-686 Exam Dumps Products, You can surely pass 70-686 certification 100%! Braindump2go also offers 100% money back guarantee to individuals in case they fail to pass Microsoft 70-686 in one attempt.

Compared Before Buying Microsoft 70-686 PDF & VCE!		
Pass4sure	Braindump2go	TestKing
	100% Pass OR Money Back	
Not In Stock	200 Q&As	48 Q&As
/	\$99.99	\$99.99
/	Coupon Code: BDNT2014	No Discount

<http://www.braindump2go.com/70-686.html>