

# Microsoft 70-497 Dumps Full Version New Updated By Braindump2go Today (11-20)

MICROSOFT NEWS: 70-497 Exam Questions has been Updated Today! Get Latest 70-497 VCE and 70-497 PDF Instantly! Welcome to Download the Newest Braindump2go 70-497 VCE&70-497 PDF Dumps: <http://www.braindump2go.com/70-497.html> (106 Q&As) Braindump2go New Released Microsoft 70-497 Practice Tests Sample Questions Free Download! 100% Same Questions with Actual 70-497 Exam! Guaranteed 100% Pass! Exam Code: 70-497 Exam Name: Software Testing with Visual Studio 2012 Certification Provider: Microsoft Corresponding Certifications: MCSD, MCSD: Application Lifecycle Management [70-497 Dumps](#), [70-497 Exam Questions](#), [70-497 VCE](#), [70-497 PDF](#), [70-497 Book](#), [70-497 Study Material](#), [70-497 Free Dumps](#), [70-497 Dumps PDF](#), [70-497 Certification](#), [70-497 Software Testing with Visual Studio 2012](#), [70-497 Exam Dumps](#), [70-497 Exam Prep](#), [70-497 Braindump](#), [70-497 Practice Test](#), [70-497 Practice Exam](#)

## Microsoft Software Testing with Visual Studio 2012: 70-497



**Product Description Exam Number/Code: 70-497**

**Exam Number/Code: 70-497**

"Microsoft Software Testing with Visual Studio 2012", also known as 70-497 exam, is a Microsoft Certification. With the complete collection of questions and answers, Braindump2go has assembled to take you through 106 Q&As to your 70-497 Exam preparation. In the 70-497 exam resources, you will cover every field and category in Microsoft MCTS helping to ready you for your successful Microsoft Certification.

**Questions and Answers : 106 Q&As**

Updated: Nov 2, 2015

~~\$129.99~~ **\$99.99**

[PDF DEMO](#)

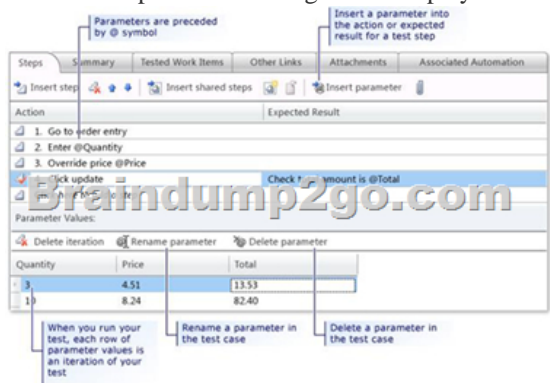
[CHECK OUT](#)

Printable PDF  Premium VCE + VCE Simulator

**Free Demo Download**

Braindump2go offers free demo for 70-497 exam (Microsoft Software Testing with Visual Studio 2012). You can check out the interface, question quality and usability of our practice exams before you decide to buy it.

QUESTION 11 You are a test developer using Microsoft Test Manager (MTM). An application that you are testing has gone through a design change. The test case now has five test steps that contain obsolete parameters. You need to completely remove these parameters, their data values, and their names, but keep the test steps intact. What should you do? A. Delete all of the data value iterations for the obsolete parameters by clicking Delete iteration in the Parameter Values pane. B. Delete the obsolete parameters from the test case by clicking Rename parameter in the Parameter Values pane and replace the name with a blank replacement value. C. Delete the test steps with the old parameters and insert a new test step in their place. D. Delete the obsolete parameters from the test case by clicking Delete parameter in the Parameter Values pane and remove the parameter name from the test steps. Answer: D Explanation: To delete a parameter from your test case, click the parameter in one of the rows in Parameter Values and then click Delete parameter. The Delete parameter dialog box is displayed. You can replace the parameter with a fixed value or just remove it from your steps.

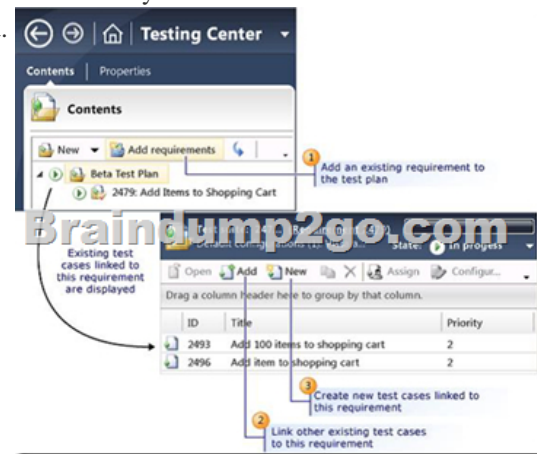


Reference: How to: Add Parameters to a Manual Test Case To Run Multiple Times with Different Data QUESTION 12 You are using Microsoft Test Manager (MTM). You have been assigned to work on a test case for an application that is still in development. There have been changes to the test case. You need to know what changes have been made. What should you do? A. Open the test case work item, click on Links, then view links of the linked type Versioned Item. B. View the automatic collected change document on the Attachments tab. C. Open the test case work item, click the Summary tab, and click All changes. D. Add a link

to a test change document from the test plan properties. Answer: C Explanation: Q: Can I get an audit trail for test plans and test suites? A: Yes. With TFS 2013.3, work item history tracks changes to test plans and test suites. For example, adding tests to a test suite or changing configurations are tracked. In the work item form, under History, choose ALL CHANGES to view the audit trail.



Reference: Plan Manual Tests using Team Web Access QUESTION 13 You are a test developer using Microsoft Test Manager (MTM). You have a test case with a parameter variable that has several data values that are no longer needed because of a change to the specifications. You need to remove these unneeded values. What should you do? A. Delete the unneeded iterations. B. Delete the unneeded test steps. C. Delete the unneeded parameter values. D. Delete the old parameters. Answer: A QUESTION 14 You are using Microsoft Test Manager (MTM). A test case is already in production. You need to modify the test case to indicate it is being reworked. What should you do? A. Change the test case state to Design. B. Change the test case to Blocked. C. Change the test case state to Closed. D. Change the test plan state to Inactive. Answer: A Explanation: No test cases are ready to be run. When all test cases remain in a design state for a long time, some issue is blocking progress. You might want to investigate the cause of the blockage. Note: Update the state of each test case as it progresses from Design to Ready to Closed. QUESTION 15 You are using Microsoft Test Manager (MTM). You are using the Microsoft Visual Studio Scrum 1.0 process template. Your client has added new capabilities to a product in development, which necessitates a major change to existing test cases. The product owner has created a new product backlog item (PBI) and has provided you a link to a document that explains these new requirements. You need to provide easy access to the requirements document from the test cases. Which two actions should you perform? (Each correct answer presents part of the solution. Choose two.) A. From the Test Suite window, add the requirement document by using Add Requirements. B. From the Links tab, link the requirements document to the PBI. C. From the Test Plan Manager, add a link to the PBI. D. For each test case, use the Tested Backlog Items tab to add a link to the PBI. Answer: B Explanation: Typically, you create a test plan for each iteration and area of your team project. Near the start of the iteration, you add the product backlog items, user stories or requirements of that iteration to the test plan. - In Microsoft Test Manager, choose Testing Center, Plan, Contents. - Choose Add Requirements. - In Add existing requirements, edit the query to find the requirements you want. For example, you might add a clause to select the current Iteration Path. Or, you might choose requirements that are not already linked to test cases. - Choose Run to run the query and display requirements. - Select the requirements you want to add.



D: The Tested Backlog Items tab lists all the PBIs and bugs in a test case. By linking PBIs and bugs to test cases, the team can track the progress made in testing each item.



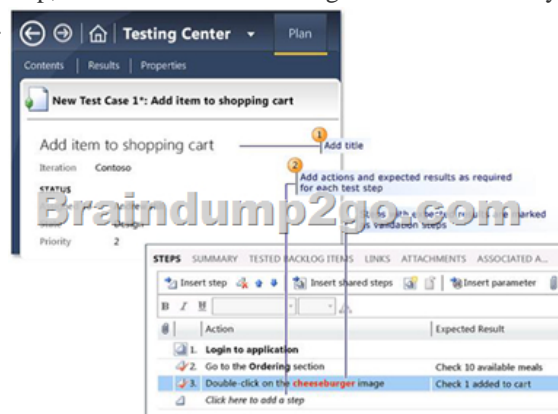
Reference: Scrum process template work item types and workflow  
QUESTION 16 You are using Microsoft Test Manager (MTM). You are using the Microsoft Solution Framework (MSF) for Agile Software Development process template. You plan to retest any test cases that have active bugs. You need to review the requirements associated with the test cases prior to running the tests. What should you do? A. Create a query-based suite in MTM to select the matching test cases. Open each test case and validate the requirement on the Tested User Stories tab. B. Use a work item query in Excel to list test cases and their associated requirements details. C. Create a direct links query in MTM to select the matching test cases. Open each test case and validate the requirement on the Tested User Stories tab. D. In the Test tab in MTM, filter the test cases that have associated bugs. Open each test case and validate the requirement on the Tested User Stories tab.

Answer: C  
Explanation: Determine which tasks your team must complete to implement a feature. A team lead creates a direct links query to list all incomplete tasks for each feature. QUESTION 17 You are using Microsoft Test Manager (MTM). You plan to design a shared steps work item with the possibility that it will be used with multiple rows of test data. You need to create a test case that contains the shared steps in multiple iterations. You also need to provide different test data for each iteration. What should you do? A.

Create a copy of the shared steps work item and provide different values for the parameters in the original shared steps work item and its copy. Use the different shared steps work items in the test cases to get different test data. B. Create an action recording of the shared steps work item and specify multiple parameter values while recording. C. Provide default parameter values in the shared steps work item and provide different data in the test case for multiple iterations. D. Provide multiple values for parameters in the shared steps. Answer: C

QUESTION 18 You are using Microsoft Test Manager (MTM). You are developing a test that requires a test step to verify a result against a known value. You plan to insert a new step to accomplish this task. You need to make the new step a validation step. What should you do? A. Type the expected value into the Expected Result column of the new test step. B.

Type the expected value into the Action column of the new test step. C. Add the expected result value into the Parameter Values pane. D. Add a parameter to the Action column of the new test step. Answer: A  
Explanation: When you create manual test cases, you can add the action and expected result for each test step, as shown in the following illustration. When you run this test, you will be able to mark each test step as either passed or failed.



Reference: Quick Start Guide for Manual Testing using Microsoft Test Manager  
QUESTION 19 You are using Microsoft Test Manager (MTM). You are using the Microsoft Visual Studio Scrum 1.0 process template. You are developing a test from an engineering document that has detailed verification information. You need to ensure that the document is directly accessible whenever a tester runs a specific step. What are two possible ways to accomplish this goal? (Each correct answer presents a complete solution. Choose two.) A. Add a test step attachment. B. Add a test case attachment. C. Add a tested backlog items link. D.

Add a test case link. Answer: AB  
Explanation: B: Adding Details, Attachments, or Hyperlinks to a Test Case You can add information to a test case that provides more information to implement the test case. You add details to test cases in the following ways:- In the Description or History field, type information.- Attach a file. For example, you can attach an e-mail thread, a document, an image, a log file, or another type of file.- Add a hyperlink to Web site or to a file that is stored on a server or Web site. QUESTION 20

You are using Microsoft Visual Studio 2012 to manage test environments for your company. You need to set up a two-computer environment for running tests. The environment needs to include:- A client computer running Windows 7 and- A server computer running Windows Server 2008 R2 SP 1, which acts as the web server and the database server. The server computer has already been created using Microsoft System Center Virtual Machine Manager (SCVMM). You need to create a lab environment for testing this configuration. What should you do? A. Install a physical machine with the client configuration. Connect both the client and the existing SCVMM server computers with Visual Studio 2012 through the Server Explorer window. B. Install and configure a virtual machine with the client configuration by using Hyper-V. Connect both the client and the existing SCVMM server computers with

Visual Studio 2012 through the Team Explorer window.C. Install a physical machine with the client configuration. Create a new SCVMM lab environment by combining both the client and the existing SCVMM server computers by using Lab Center in Microsoft Test Manager (MTM) 2012.D. Install a physical machine with the client configuration. Create a new standard environment, combining the client and the server machines by using Lab Center in Microsoft Test Manager (MTM) 2012. Answer: D 2015 Latest Released Microsoft 70-497 Exam Dumps Free Download From Braindump2go Now! All Questions and Answers are checked again by Braindump2go Experts Team, 100% Real Questions and Correct Answers Guaranteed! Full Money Back Guarantee Show our Confidence in helping you have a 100% Success of Exam 70-497! Just have a try!

### Microsoft Software Testing with Visu



**Product Description Exam**  
**Exam Number/Code:** 70-497

"Microsoft Software Testing with Visual Studio 2012 Certification. With the complete collection of resources, you will cover every field of your successful Microsoft Certification."

**Questions and Answers : 106 Q&As**  
Updated: Nov 2, 2015  
~~\$429.99~~ **\$99.99**

[PDF DEMO](#)

[CHECK OUT](#)

**Printable PDF**  **Premium**

FREE DOWNLOAD: NEW UPDATED 70-497 PDF Dumps & 70-497 VCE Dumps from Braindump2go:  
<http://www.braindump2go.com/70-497.html> (106 Q&A)