

## Free Braindump2go Microsoft 70-332 VCE Exam Questions and Answers Download (141-150)

Important News: Microsoft 70-332 Exam Questions are been updated recently! The Microsoft 70-332 Practice Exam is a very hard exam to successfully pass your exam. Here you will find Free Braindump2go Microsoft Practice Sample Exam Test Questions that will help you prepare in passing the 70-332 exam. Braindump2go Guarantees you 100% PASS exam 70-332! Vendor: Microsoft Exam Code: 70-332 Exam Name: Microsoft Advanced Solutions of Microsoft SharePoint Server 2013 Keywords: 70-332 Exam Dumps, 70-332 Practice Tests, 70-332 Practice Exams, 70-332 Exam Questions, 70-332 PDF, 70-332 VCE Free, 70-332 Book, 70-332 E-Book, 70-332 Study Guide, 70-332 Braindump, 70-332 Prep Guide

### Compared Before Buying Microsoft 70-332 PDF & VCE!

Pass4sure	Braindump2go 100% Pass OR Money Back	Test King
173 Q&As - Practice	180 Q&As – Real Questions	157 Q&As - Practice
\$124.99	\$99.99	971 HKD
No Discount	Coupon Code: BDNT2014	No Discount

**QUESTION 141** You recently upgraded from SharePoint Server 2010 to SharePoint Server 2013. You have not upgraded any site collections. You have a site collection that contains an InfoPath form library. The InfoPath form library has a content type named CT1. You need to verify whether CT1 will conflict with any of the content types in SharePoint Server 2013. What should you do? A. From Site Settings, navigate to Site collection upgrade. B. Run the Test-SPContentDatabasecmdlet. C. From Site Settings, navigate to Site collection health checks. D. From Site Settings, navigate to Content type publishing. Answer: C Explanation: Conflicting content types were found during site collection health check When you run a site collection health check before upgrading to SharePoint 2013, SharePoint will check to see if there are any conflicts between existing content types and content types that are created when you upgrade the site to SharePoint 2013. A conflict occurs when both content types have the same name. To fix this issue, you need to rename the existing content type before upgrading. **QUESTION 142** Hotspot Question You plan to deploy a SharePoint Server 2013 server farm. The president of your company sends you the following email message regarding the planned deployment: 'Our company loses an average of \$5,000 per minute during service outages. At that rate, \$300,000 per hour is a major cost to the company and should be reduced or eliminated. The company must provide continuity for IT services.' The director of IT services sends you the following email message regarding the planned deployment: The company plans to implement the following as part of the deployment:- Load balance all of the Web servers.- Perform daily and hourly backups of all data.- Centralize all of the service applications on a single server. - Provide redundancy for all of the network components, such as switches and routers.' The director of IT services identifies the following requirements for the planned deployment:- Four front-end Web servers- One database server that will host all of the farm databases and will be replicated to another database server by using log shipping- One dedicated application server that will host all of the service applications, including the Search Service Application and all of the search components. Select Yes if the statement can be shown to be true based on the available information; otherwise select No. **Answer Area**

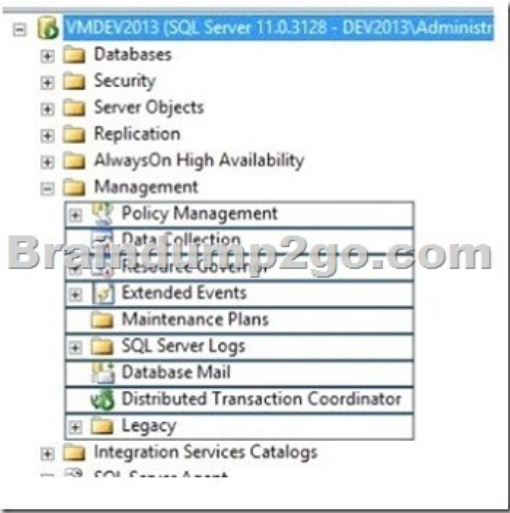
	Yes	No
If the main database server fails, users can access all of the service applications without any disruptions.	<input type="radio"/>	<input type="radio"/>
If the main database server fails, users can access site collections without any disruptions.	<input type="radio"/>	<input type="radio"/>
If a front-end Web server fails, users can access site collections without any disruptions.	<input type="radio"/>	<input type="radio"/>
If the application server fails, content will continue to be indexed.	<input type="radio"/>	<input type="radio"/>

Answer:

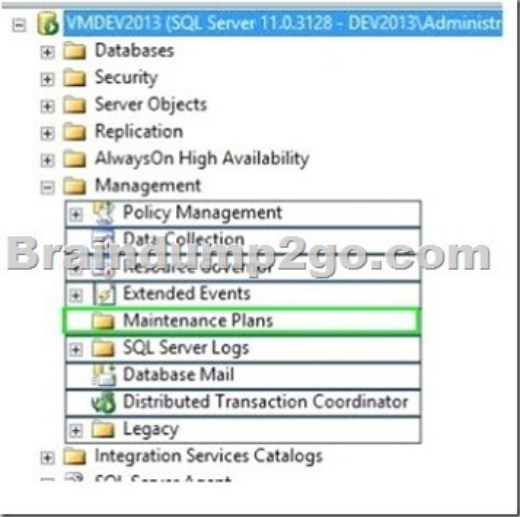
Answer Area

	Yes	No
If the main database server fails, users can access all of the service applications without any disruptions.	<input type="radio"/>	<input checked="" type="radio"/>
If the main database server fails, users can access site collections without any disruptions.	<input checked="" type="radio"/>	<input type="radio"/>
If a front-end Web server fails, users can access site collections without any disruptions.	<input checked="" type="radio"/>	<input type="radio"/>
If the application server fails, content will continue to be indexed.	<input checked="" type="radio"/>	<input type="radio"/>

QUESTION 143Hotspot QuestionYou have a SharePoint Server 2013 server farm that uses a Microsoft SQL Server 2012 database server.You need to automate the backup of the content databases.From which node should you perform the configuration? (To answer, select the appropriate node in the answer area.)



Answer:



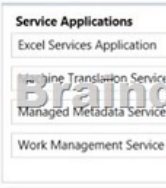
QUESTION 144Hotspot QuestionYou have a SharePoint Server 2013 server farm.You discover that many site collection administrators deploy a solution named Soil that contains a feature named Feature1. The administrators do not have farm administrator rights.You discover that Feature1 has a memory leak.You need to prevent Feature1 from being used in the farm.Which link should you use? (To answer, select the appropriate link in the answer area.)



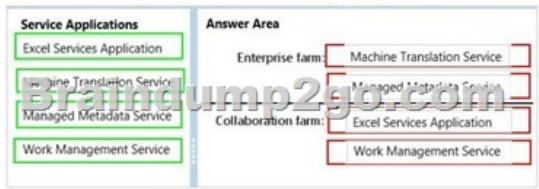
Answer: System Settings



QUESTION 145 Drag and Drop Question You plan to deploy SharePoint Server 2013 to your enterprise organization's multi-farm configuration. A dedicated enterprise services farm will be created to host shared service applications. Two collaboration farms will be created to host collaboration sites. All users must be able to perform the following tasks: - Aggregate tasks from different site collections. - Automatically translate pages to different languages. - Classify documents by using an enterprise taxonomy. - View Microsoft Excel files rendered in the web browser of the users. You need to identify which service applications to deploy to each farm. What should you identify? (To answer, drag the appropriate service applications to the correct farms. Each service application may be used once, more than once, or not at all. You may need to drag the split bar between panes or scroll to view content.)



Answer:



QUESTION 146 An organization has created graphic designs that will be used for branding in a SharePoint farm. You need to develop the supporting assets required to implement the design in the minimum amount of time. What should you use? A. Design Manager B. Asset Manager C. SharePoint channels D. Master Page conversion Answer: A Explanation: Design Manager in SharePoint 2013 provides a new approach for designing websites. Several new branding and design-based capabilities available in Design Manager enable you to create a compelling look, feel, and behavior for your SharePoint 2013 site. Design Manager also supports importing and exporting a visual design, and can help you ensure a consistent visual experience across all device platforms in your organization. Incorrect: Not C: With device channels in SharePoint 2013, you can render a single publishing site in multiple ways by using different designs that target different devices. QUESTION 147 You plan to deploy a SharePoint Server 2013 server farm. You identify the following requirements: - The farm must be available if a single server fails. - The farm must support the creation of service applications. - All search components must be available if a single server fails. - Microsoft SQL Server database and SharePoint Server 2013 must not be deployed to the same servers. What is the minimum number of servers required for the deployment? A. 2 B. 3 C. 4 D. 0 Answer: C Explanation: A three-tier farm configuration consists of two front-end web servers, an application server, and a database server. QUESTION 148 You deploy SharePoint Server 2013. You need to install a SharePoint hosted app named App1 in a site. Which Windows PowerShell cmdlet should you run? A. Install-SPSolution and then run Add-SPSolution B. Import-SPAppPackage and then run Install-SPApp C. Add-SPSolution and then run Install-SPSolution D. Install-SPAppPackage and then run Import-SPApp Answer: B Explanation:

<https://technet.microsoft.com/en-us/library/fp161231.aspx>

QUESTION 149 You recently upgraded a SharePoint Server 2010 server farm to SharePoint Server 2013. The farm contains many sites. The sites contain frequently updated content. You need to ensure that users can perform demo upgrades of the sites. The solution must minimize the impact on the users. Which feature should you enable in Microsoft SQL Server? A. Database mirroring B. Log shipping C. AlwaysOn Availability Groups D. Snapshot Answer: B Explanation: With log shipping, you back up the transaction logs from a primary database to a secondary database on a separate instance of SQL Server. Log shipping enables you to automatically send transaction log files for databases from a primary database server instance to a secondary database server instance. Reference: Configure log shipping in SharePoint 2013 QUESTION 150 Hotspot Question You are planning the deployment of a SharePoint Server 2013 server farm. You plan to deploy Microsoft SQL Server 2012 AlwaysOn Availability Groups. The groups will have four replicas configured as shown in the following table.

Replica name	Replica configuration
SQLReplica1	SQLReplica1 is the primary replica.
SQLReplica2	SQLReplica2 is used for high-availability and is installed in the same data center as SQLReplica1.
SQLReplica3	SQLReplica3 is used for disaster recovery purposes and is installed in a remote location.
SQLReplica4	SQLReplica4 is used for reporting purpose. Failure of this replica must not affect the SharePoint Server 2013 deployment.

You need to recommend which mode of commit must be used for each replica. Which commit type should you recommend for each replica? (To answer, select the appropriate options in the answer area.)

**Answer Area**

SQLReplica2:

Asynchronous commit

Synchronous commit

SQLReplica3:

Asynchronous commit

Synchronous commit

SQLReplica4:

Asynchronous commit

Synchronous commit

Answer: **Answer Area**

SQLReplica2:

Asynchronous commit

Synchronous commit

SQLReplica3:

Asynchronous commit

Synchronous commit

SQLReplica4:

Asynchronous commit

Synchronous commit

Want to be 70-332 certified? Using Braindump2go New Released 70-332 Exam Dumps Now! We Promise you a 100% Success Passing Exam 70-332 Or We will return your money back instantly!

Compared Before Buying Microsoft 70-332 PDF & VCE!		
Pass4sure	Braindump2go 100% Pass OR Money Back	Test King
173 Q&As - Practice	180 Q&As – Real Questions	157 Q&As - Practice
\$124.99	\$99.99	971 HKD
No Discount	Coupon Code: BDNT2014	No Discount

<http://www.braindump2go.com/70-332.html>

Output as PDF file has been powered by [ [Universal Post Manager](#) ] plugin from [www.ProfProjects.com](#)

| Page 4/4 |