

70-662 New Added Questions 100 Percent Pass Exam Guaranteed Free Download Provided By Braindump2go Now! (271-280)

MICROSOFT NEWS: 70-662 Exam Questions has been Updated Today! Get Latest 70-662 VCE and 70-662 PDF Instantly! Welcome to Download the Newest Braindump2go 70-662 VCE&70-662 PDF Dumps:

<http://www.braindump2go.com/70-662.html> (507 Q&As) New Released Braindump2go Microsoft 70-662 Dumps PDF - Questions and Answers Updated with Microsoft Official Exam Center! Visit Braindump2go and download our 70-662 Exam Questions Now, Pass 70-662 100% at your first time! Exam Code: 70-662 Exam Name TS: Microsoft Exchange Server 2010, Configuring Certification Provider: Microsoft Corresponding Certifications: MCITP, MCITP: Enterprise Messaging Administrator on Exchange 2010, MCTS, MCTS: Microsoft Exchange Server 2010, Configuring 70-662 Dumps, 70-662 PDF, 70-662 PDF eBook, 70-662 Braindump, 70-662 Study Guide, 70-662 Book, 70-662 Practice Test, 70-662 Dumps PDF, 70-662 VCE, 70-662 VCE Dumps, 70-662 Valid Dumps, 70-662 Exam Questions Free, 70-662 Dumps, 70-662 Free Dumps, 70-662 Questions and Answers Free, 70-662 Braindump PDF, 70-662 Braindump VCE, 70-662 Preparation

TS: Microsoft Exchange Server 2010, Configuring: 70-662



Questions and Answers : 507
Q&As

Updated: Jan 02, 2016

~~\$129.99~~ **\$99.99**

[PDF DEMO](#)

[CHECK OUT](#)

Product Description Exam Number/Code: 70-662

Exam Number/Code: 70-662

"TS: Microsoft Exchange Server 2010, Configuring", also known as 70-662 exam, is a Microsoft Certification. With the complete collection of questions and answers, Braindump2go has assembled to take you through 507 Q&As to your 70-662 Exam preparation. In the 70-662 exam resources, you will cover every field and category in Microsoft MCITP helping to ready you for your successful Microsoft Certification.

Free Demo Download

Braindump2go offers free demo for 70-662 exam (TS: Microsoft Exchange Server 2010, Configuring). You can check out the interface, question quality and usability of our practice exams before you decide to buy it.

Printable PDF **Premium VCE + VCE Simulator**

QUESTION 271 Your network contains an Active Directory domain named contoso.com. The network contains a server named Server1 that runs Exchange Server 2010 Service Pack 1 (SP1). The Exchange organization contains 500 mailboxes. All of the mailboxes are stored on a mailbox database named DB1. You need to prevent a user named User1 from permanently deleting email messages from his mailbox. Which PowerShell cmdlet should you use? A. New-MailboxAuditSearchLogB. New-ManagementRoleAssignmentC. New-ManagementRoleD. New-RoleAssignmentPolicyE. New-RoleGroupF. New-ManagementRoleEntryG. New-ManagementScopeH. Add-ManagementRoleEntryI. New-EmailAddressPolicyJ. Add-ADPermisstonK. Set-MailboxL. Set-DistributionGroupM. Add-MailboxPermission Answer: KExplanation: Set-Mailbox User1-LitigationHoldEnabled \$true QUESTION 272 Your network contains an Active Directory domain named contoso.com. The network contains a server named Server1 that runs Exchange Server 2010 Service Pack 1 (SP1). The Exchange organization contains 500 mailboxes. All of the mailboxes are stored on a mailbox database named DB1. You need to provide an administrator named Admin1 with the ability to search for mailbox content in multiple mailboxes. Which Windows PowerShell cmdlet should you use? A. New-EmailAddressPolicyB. Set-MailboxC. Add-ManagementRoleEntryD. New-ManagementScopeE. New-ManagementRoleF. Add-AOPermissionG. New-ManagementRoleEntryH. Set-OistributionGroupI. Add-MailboxPermissionJ. New-RoleGroupK. New-ManagementRoleAssignmentL. New-MailboxAuditSearchLogM. New-RoleAssignmentPolicy Answer: KExplanation: <http://www.1ask2.com/Exchange2010/RBAC2/RBAC3.html> QUESTION 273 Your network contains an Active Directory domain named contoso.com. The network contains a server named Server1 that runs Exchange Server 2010 Service Pack 1 (SP1). The Exchange organization contains 500 mailboxes. All of the mailboxes are stored on a mailbox database named DB1. You need to add an administrator named Admin1 to the Recipient Management role group. Admin1 must only be able to manage the Exchange recipients in an organizational unit named OU1. Which PowerShell cmdlet should you use first? A. Set-DistributionGroupB. New-ManagementScopeC. New-ManagementRoleD. Add-MailboxPermissionE. New-RoleGroupF. New-EmailAddressPolicyG. New-RoleAssignmentPolicyH. New-MailboxAuditSearchUgI. Add-ADPermissionJ. Add-ManagementRoleEntryK. New-ManagementRoleEntryL. Set-MailboxM. New-ManagementPoleAssignment Answer: EExplanation: To add a mailbox to the Recipient Management role group, you actually

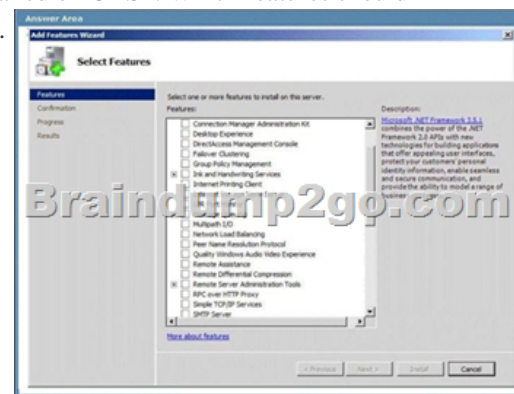
have to start off with: Add- RoleGroupMember "Recipient Management"-Member Admin1 However, as mentioned in the question, this needs to be scoped to a single OU, and you wouldn't want to scope the default Recipient Management role group to one OU as it would affect all other mailboxes in that group. So, you would have to create a new role group that is scoped to a single OU and has all the same roles that are assigned to the Recipient Management role group, then put in Admin1 as the only Role Group Member. You can accomplish this as follows: New-RoleGroup -Name "Admin Recipient Management" -Roles "Distribution Groups", "Mail Enabled Public Folders", "Mail Recipient Creation", "Mail Recipients", "Message Tracking", "Migration", "Move Mailboxes", "Recipient Policies"-Members Admin1 - RecipientOrganizationalUnitScope OU1 Reference:

<http://technet.microsoft.com/en-us/library/dd638209.aspx>(Use the Shell to create a role group with an OU scope)

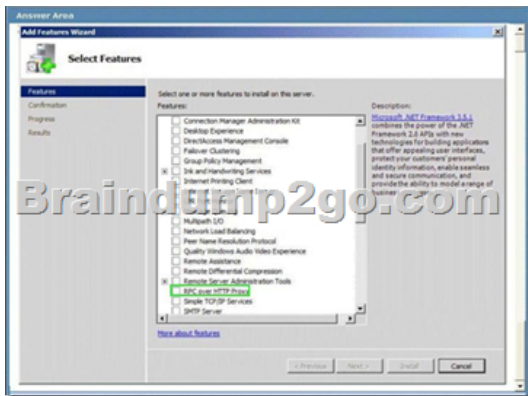
<http://technet.microsoft.com/en-us/library/dd638181.aspx>(EXAMPLE 2) QUESTION 274 You have an Exchange organization. All servers in the organization have Exchange Server 2010 Service Pack 1 (SP1) installed. The network contains two Active Directory sites named Site1 and Site2. Each site contains two Client Access servers. All mailbox databases in the organization are replicated to Mailbox servers in both sites. All users connect to their mailbox by using Microsoft Office Outlook 2003. You create a Client Access server array named array1.contoso.com in Site1, and then configure all users to connect to array1.contoso.com. You verify that all users can connect successfully to array1.contoso.com. One month later, all of the servers in Site1 fail. You need to ensure that all users can connect to a Client Access server in Site2 by using array1.contoso.com. What should you do? A. Modify the host (A) record for array1.contoso.com to point to the IP address of a Client Access server in Site2. B. Create a Client Access server array named array2.contoso.com in Site2. Rename array2.contoso.com as array1.contoso.com. C. Modify the host (A) record for autodiscover.contoso.com to point to the IP address of a Client Access server in Site2. D. Create a Client Access server array named array2.contoso.com in Site1. Remove all of the Client Access servers from array1.contoso.com. Answer: A QUESTION 275 You have an Exchange Server 2010 Service Pack 1 (SP1) organization that contains five servers. The servers are configured as shown in the following table. You deploy a farm of application servers that sends email messages to Internet recipients. The application servers are configured to send the email messages through the Hub Transport servers. You deploy a load balancing solution for the Hub Transport servers. You need to ensure that only the application servers can relay email messages to Internet recipients over SMTP. What should you do? (Choose all that apply.)

Server name	Server role	Network
MBX1	Mailbox	Internal
Hub1	Hub Transport	Internal
Hub2	Hub Transport	Internal
Edge1	Edge Transport	Perimeter
Edge2	Edge Transport	Perimeter

A. Create a new Receive connector. B. Create an Edge Transport rule. C. Run the Set-TransportServer cmdlet. D. Create a new Send connector. E. Create a Hub Transport rule. Answer: ABE QUESTION 276 Hotspot Question Your network contains an Active Directory forest named fabrikam.com. The forest contains an Active Directory site named Denver. You have an Exchange Server 2010 Service Pack 1 (SP1) organization. You have a Client Access server named CAS1. You need to ensure that you can install Outlook Anywhere on CAS1. The solution must minimize the number of features installed on CAS1. Which features should you install on CAS1? To answer, select the appropriate feature or features in the answer area.



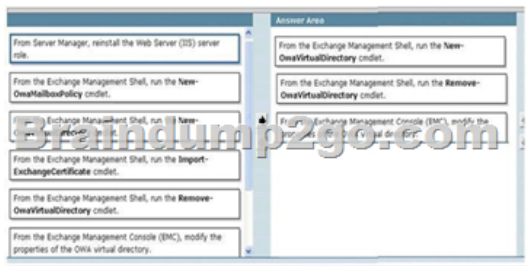
Answer:



Explanation: The RPC over HTTP feature must be installed. Once you have met these prerequisites, you can enable Outlook Anywhere. Reference: <http://technet.microsoft.com/en-us/library/bb123741.aspx> QUESTION 277 Drag and Drop Question You have an Exchange Server 2010 Service Pack 1 (SP1) organization. Users connect to the organization from Outlook Web App by using the webmail.contoso.com fully qualified domain name (FQDN). You need to recreate the OWA virtual directory on a server that runs Exchange Server 2010 SP1. The solution must ensure that users can connect to Outlook Web App by using the webmail.contoso.com FQDN. What should you do? To answer, move the appropriate actions from the list of actions to the answer area and arrange them in the correct order.



Answer:



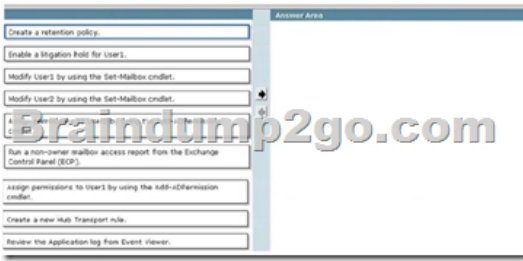
Explanation: 1. From the Exchange Management Shell, run the Remove-OwaVirtualDirectory cmdlet. 2. From the Exchange Management Shell, run the New-OwaVirtualDirectory cmdlet. 3. From the Exchange Management Console (EMC), modify the properties of the OWA Virtual Directory. Reference:

<http://exchangeadventures.com/2010/06/18/recreate-exchange-iis-virtual-directories-with-exchange-2010-sp1> QUESTION 278

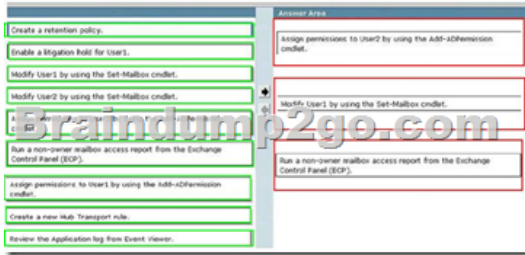
You have an Exchange organization. All servers in the organization have Exchange Server 2010 Service Pack 1 (SP1) installed. You need to prevent users on the network from enabling text message notifications to their Windows mobile devices. What should you configure? A. a Group Policy administrative template B. an RMS template C. an Outlook Web App mailbox policy D. an Exchange ActiveSync mailbox policy Answer: C QUESTION 279

Your network contains an Active Directory forest named contoso.com. The forest contains an Exchange Server 2010 Service Pack 1 (SP1) organization. A partner company has an Exchange Server 2010 SP1 organization. You need to implement federated delegation between your organization and the partner organization. What should you do first? A. Create a federation trust B. Install the Federation Service Proxy role service. C. Create a forest trust. D. Install the Federation Service role service. Answer: A QUESTION 280

Drag and Drop Question Your network contains an Exchange Server 2010 Service Pack 1 (SP1) organization named fabrikam.com. You have two mailbox-enabled users named User1 and User2. You need to perform the following tasks: - Ensure that User2 can send email messages as User1. - Ensure that an entry is logged on the server each time User2 sends a message as User1. - Review the list of logged email messages. What should you do?



Answer:



Explanation:3. Run a non-owner mailbox access report from the Exchange Control Panel (ECP).1. Assign permissions to User2 by using the Add-ADPermission cmdlet.2. Modify user1 by using the Set-Mailbox cmdlet.3. Run a non-owner mailbox access report from the Exchange Control Panel (ECP). 1-This example grants Send As permissions for Aaron Painter to Ellen Adams's mailbox. Add-ADPermission-Identity "Ellen Adams"-User AaronPainter-AccessRights ExtendedRight-ExtendedRights "send as"2-You need to be assigned permissions before you can perform this procedure. To see what permissions you need, see the "Mailbox audit logging" entry in the Messaging Policy and Compliance Permissions topic. This example enables mailbox audit logging for Ben Smith's mailbox. Set-Mailbox-Identity "Ben Smith"-AuditEnabled \$true3-non-owner mailbox access report ECP Braindump2go Promise All 70-662 Questions and Answers are the Latest Updated,we aim to provide latest and guaranteed questions for all certifications.You just need to be braved in trying then we will help you arrange all left things! 100% Pass All Exams you want Or Full Money Back! Do you want to have a try on passing 70-662?

TS: Microsoft Exchange Server 2010, Configuring: 70-662



Questions and Answers : 507 Q&As

Updated: Jan 02, 2016

~~\$129.99~~ **\$99.99**

[PDF DEMO](#)

[CHECK OUT](#)

Product Description Exam Number/Code: 70-662

Exam Number/Code: 70-662

"TS: Microsoft Exchange Server 2010, Configuring", also known as 70-662 exam, is a Microsoft Certification. With the complete collection of questions and answers, Braindump2go has assembled to take you through 507 Q&As to your 70-662 Exam preparation. In the 70-662 resources, you will cover every field and category in Microsoft MCITP helping to ready you for your successful Microsoft Certification.

Free Demo Download

Braindump2go offers free demo for 70-662 exam (TS: Microsoft Exchange Server 2010, Configuring). You can check out the interface, question quality and usability of our practice exams before you decide to buy it.

Printable PDF **Premium VCE + VCE Simulator**

FREE DOWNLOAD: NEW UPDATED 70-662 PDF Dumps & 70-662 VCE Dumps from Braindump2go:
<http://www.braindump2go.com/70-662.html> 507 Q&As)