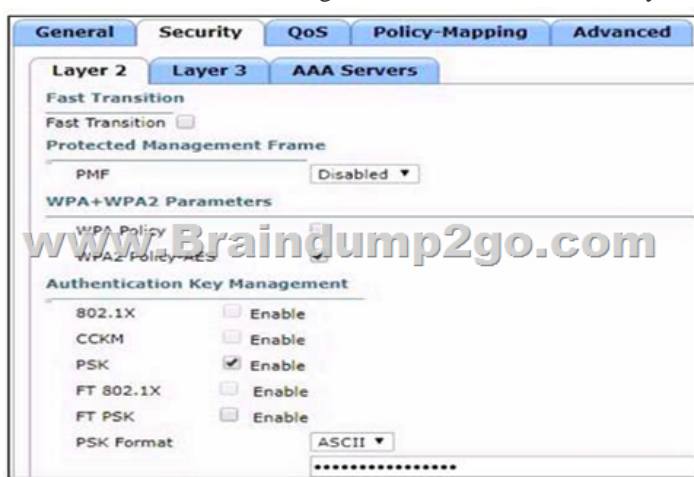


## [2020-August-NewDownload Brindump2go 350-401 Exam Dumps 350-401 184Q Free[Q61-Q75

2020/August Latest Brindump2go 350-401 Exam Dumps with PDF and VCE Free Updated Today! Following are some new 350-401 Real Exam Questions!  
**QUESTION 61** Which TCP setting is tuned to minimize the risk of fragmentation on a GRE/IP tunnel?  
A. MTUB. Window sizeC. MRUD. MSS  
Answer: D  
Explanation: The TCP Maximum Segment Size (TCP MSS) defines the maximum amount of data that a host is willing to accept in a single TCP/IP datagram. This TCP/IP datagram might be fragmented at the IP layer. The MSS value is sent as a TCP header option only in TCP SYN segments. Each side of a TCP connection reports its MSS value to the other side. Contrary to popular belief, the MSS value is not negotiated between hosts. The sending host is required to limit the size of data in a single TCP segment to a value less than or equal to the MSS reported by the receiving host. TCP MSS takes care of fragmentation at the two endpoints of a TCP connection, but it does not handle the case where there is a smaller MTU link in the middle between these two endpoints. PMTUD was developed in order to avoid fragmentation in the path between the endpoints. It is used to dynamically determine the lowest MTU along the path from a packet's source to its destination. Reference: <http://www.cisco.com/c/en/us/support/docs/ip/generic-routing-encapsulation-gre/25885-pmtud-ipfrag.html> (there is some examples of how TCP MSS avoids IP Fragmentation in this link but it is too long so if you want to read please visit this link)  
Note: IP fragmentation involves breaking a datagram into a number of pieces that can be reassembled later.  
**QUESTION 62** Which statement about an RSPAN session configuration is true?  
A. A filter must be configured for RSPAN Regions  
B. Only one session can be configured at a time  
C. A special VLAN type must be used as the RSPAN destination  
D. Only incoming traffic can be monitored  
Answer: C  
Explanation: The traffic for each RSPAN session is carried over a user-specified RSPAN VLAN that is dedicated for that RSPAN session in all participating switches -> This VLAN can be considered a special VLAN type -> Answer C is correct. Reference:

[https://www.cisco.com/c/en/us/td/docs/switches/lan/catalyst3750x\\_3560x/software/release/12-2\\_55\\_se/configuration/guide/3750xscg/swspan.html](https://www.cisco.com/c/en/us/td/docs/switches/lan/catalyst3750x_3560x/software/release/12-2_55_se/configuration/guide/3750xscg/swspan.html)  
We can configure multiple RSPAN sessions on a switch at a time, then continue configuring multiple RSPAN sessions on the other switch without any problem -> Answer B is not correct. This is how to configure Remote SPAN (RSPAN) feature on two switches. Traffic on FastEthernet0/1 of Switch 1 will be sent to Fa0/10 of Switch2 via VLAN 40.  
+ Configure on both switches  
Switch1,2(config)#vlan 40  
Switch1,2(config-vlan)#remote-span  
+ Configure on Switch1  
Switch1(config)# monitor session 1 source interface FastEthernet 0/1  
Switch1(config)# monitor session 1 destination remote vlan 40  
+ Configure on Switch2  
Switch2(config)#monitor session 5 source remote vlan 40  
Switch2(config)# monitor session 5 destination interface FastEthernet 0/10  
**QUESTION 63** Refer to the exhibit. Based on the configuration in this WLAN security setting. Which method can a client use to authenticate to the network?



A. text string  
B. username and password  
C. certificate  
D. RADIUS token  
Answer: A  
**QUESTION 64** Which two pieces of information are necessary to compute SNR? (Choose two.)  
A. EIRP  
B. noise floor  
C. antenna gain  
D. RSSI  
E. transmit power  
Answer: B  
Explanation: Signal to Noise Ratio (SNR) is defined as the ratio of the transmitted power from the AP to the ambient (noise floor) energy present. To calculate the SNR value, we add the Signal Value to the Noise Value to get the SNR ratio. A positive value of the SNR ratio is always better. Here is an example to tie together this information to come up with a very simple RF plan calculator for a single AP and a single client.  
+ Access Point Power = 20 dBm + 50 foot antenna cable = ? 3.35 dB Loss +  
Signal attenuation due to glass wall with metal frame = -6 dB + External Access Point Antenna = + 5.5 dBi gain + RSSI at WLAN

Client = -75 dBm at 100ft from the AP+ Noise level detected by WLAN Client = -85 dBm at 100ft from the APBased on the above, we can calculate the following information.+ EIRP of the AP at source =  $20 + 3.35 + 5.5 = 22.15$  dBm+ Transmit power as signal passes through glass wall =  $22.15 + 6 = 16.15$  dBm+ SNR at Client =  $-75 + -85 = 10$  dBm (difference between Signal and Noise)  
Reference:

[https://www.cisco.com/c/en/us/td/docs/solutions/Enterprise/Borderless\\_Networks/Unified\\_Access/CMX/CMX\\_RFFund.html](https://www.cisco.com/c/en/us/td/docs/solutions/Enterprise/Borderless_Networks/Unified_Access/CMX/CMX_RFFund.html)

Receive Signal Strength Indicator (RSSI) is a measurement of how well your device can hear a signal from an access point or router. It's a value that is useful for determining if you have enough signal to get a good wireless connection.EIRP tells you what's the actual transmit power of the antenna in milliwatts.dBm is an abbreviation for ?decibels relative to one milliwatt,? where one milliwatt (1 mW) equals 1/1000 of a watt. It follows the same scale as dB. Therefore 0 dBm = 1 mW, 30 dBm = 1 W, and -20 dBm = 0.01 mWQUESTION 65Refer to the exhibit. The WLC administrator sees that the controller to which a roaming client associates has Mobility Role Anchor configured under Clients > Detail.Which type of roaming is supported?



A. IndirectB. Layer 3 intercontrollerC. Layer 2 intercontrollerD. IntercontrollerAnswer: BExplanation:If the clients roam between APs registered to different controllers and the client WLAN on the two controllers is on different subnet, then it is called inter-controller L3 roam.In this situation as well controllers exchange mobility messages. Client database entry change is completely different that to L2 roam(instead of move, it will copy). In this situation the original controller marks the client entry as ?Anchor? where as new controller marks the client entry as ?Foreign?.The two controllers now referred to as ?Anchor controller? & ?Foreign Controller? respectively. Client will keep the original IP address & that is the real advantage.Note: Inter-Controller (normally layer 2) roaming occurs when a client roam between two APs registered to two different controllers, where each controller has an interface in the client subnet.QUESTION 66

What is the difference between the enable password and the enable secret password when password encryption is enable on an IOS device?A. The enable password is encrypted with a stronger encryption method.B. There is no difference and both passwords are encrypted identically.C. The enable password cannot be decrypted.D. The enable secret password is protected via stronger cryptography mechanisms.Answer: DExplanation:The ?enable secret? password is always encrypted (independent of the ?service password-encryption? command) using MD5 hash algorithm. The ?enable password? does not encrypt the password and can be view in clear text in the running-config. In order to encrypt the ?enable password?, use the ?service password-encryption? command. This command will encrypt the passwords by using the Vigenere encryption algorithm. Unfortunately, the Vigenere encryption method is cryptographically weak and trivial to reverse.The MD5 hash is a stronger algorithm than Vigenere so answer D is correct.QUESTION 67

When reason could cause an OSPF neighborship to be in the EXSTART/EXCHANGE state?A. Mismatched OSPF network typeB. Mismatched areasC. Mismatched MTU sizeD. Mismatched OSPF link costsAnswer: CExplanation:When OSPF adjacency is formed, a router goes through several state changes before it becomes fully adjacent with its neighbor. The states are Down -> Attempt (optional) -> Init -> 2-Way -> Exstart -> Exchange -> Loading -> Full. Short descriptions about these states are listed below:Down: no information (hellos) has been received from this neighbor.Attempt: only valid for manually configured neighbors in an NBMA environment. In Attempt state, the router sends unicast hello packets every poll interval to the neighbor, from which hellos have not been received within the dead interval. Init: specifies that the router has received a hello packet from its neighbor, but the receiving router's ID was not included in the hello packet2-Way: indicates bi-directional communication has been established between two routers.Exstart: Once the DR and BDR are elected, the actual process of exchanging link state information can start between the routers and their DR and BDR.Exchange: OSPF routers exchange database descriptor (DBD) packetsLoading: In this state, the actual exchange of link state information occursFull: routers are fully adjacent with each other(Reference:

[http://www.cisco.com/en/US/tech/tk365/technologies\\_tech\\_note09186a0080093f0e.shtml](http://www.cisco.com/en/US/tech/tk365/technologies_tech_note09186a0080093f0e.shtml))Neighbors Stuck in Exstart/Exchange

Output as PDF file has been powered by [ [Universal Post Manager](#) ] plugin from [www.ProfProjects.com](#) | Page 2/4 |

StateThe problem occurs most frequently when attempting to run OSPF between a Cisco router and another vendor's router. The problem occurs when the maximum transmission unit (MTU) settings for neighboring router interfaces don't match. If the router with the higher MTU sends a packet larger than the MTU set on the neighboring router, the neighboring router ignores the packet.

**QUESTION 68** Which two statements about VRF-lite are true? (Choose two)

A. It can increase the packet switching rate.  
B. It supports most routing protocols, including EIGRP, ISIS, and OSPF.  
C. It supports MPLS-VRF label exchange and labeled packets.  
D. It should be used when a customer's router is connected to an ISP over OSPF.  
E. It can support multiple customers on a single switch.

**Answer:** B, E  
**Explanation:** In VRF-Lite, Route distinguisher (RD) identifies the customer routing table and allows customers to be assigned overlapping addresses. Therefore it can support multiple customers with overlapping addresses -> Answer E is correct. VRFs are commonly used for MPLS deployments, when we use VRFs without MPLS then we call it VRF lite -> Answer C is not correct. VRF-Lite supports most popular routing protocols: BGP, OSPF, EIGRP, RIP, and static routing -> Answer B is correct.

**QUESTION 69** Which statement about the default QoS configuration on a Cisco switch is true?

A. All traffic is sent through four egress queues.  
B. Port trust is enabled.  
C. The Port Cos value is 0.  
D. The Cos value of each tagged packet is modified.

**Answer:** C  
**Explanation:** C

**QUESTION 70** Which IPv6 migration method relies on dynamic tunnels that use the 2002::/16 reserved address space?

A. 6RDB.  
B. 6to4.  
C. ISATAP.  
D. GRE

**Answer:** B  
**Explanation:** 6to4 tunnel is a technique which relies on reserved address space 2002::/16 (you must remember this range). These tunnels determine the appropriate destination address by combining the IPv6 prefix with the globally unique destination 6to4 border router's IPv4 address, beginning with the 2002::/16 prefix, in this format: 2002:border-router-IPv4-address::/48. For example, if the border-router-IPv4-address is 64.101.64.1, the tunnel interface will have an IPv6 prefix of 2002:4065:4001:1::/64, where 4065:4001 is the hexadecimal equivalent of 64.101.64.1. This technique allows IPv6 sites to communicate with each other over the IPv4 network without explicit tunnel setup but we have to implement it on all routers on the path.

**QUESTION 71** How are the Cisco Express Forwarding table and the FIB related to each other?

A. The FIB is used to populate the Cisco Express Forwarding table.  
B. The Cisco Express Forwarding table allows route lookups to be forwarded to the route processor for processing before they are.  
C. There can be only one FIB but multiple Cisco Express Forwarding tables on IOS devices.  
D. Cisco Express Forwarding uses a FIB to make IP destination prefix-based switching decisions.

**Answer:** D  
**Explanation:** The Forwarding Information Base (FIB) table ? CEF uses a FIB to make IP destination prefix-based switching decisions. The FIB is conceptually similar to a routing table or information base. It maintains a mirror image of the forwarding information contained in the IP routing table. When routing or topology changes occur in the network, the IP routing table is updated, and these changes are reflected in the FIB. The FIB maintains next-hop address information based on the information in the IP routing table.  
**Reference:** <https://www.cisco.com/c/en/us/support/docs/routers/12000-series-routers/47321-ciscoef.html>

**QUESTION 72** Which two operations are valid for RESTCONF? (Choose two.)

A. HEAD.  
B. REMOVE.  
C. PULL.  
D. PATCH.  
E. ADD.  
F. PUSH

**Answer:** A, D  
**Explanation:** RESTCONF operations include OPTIONS, HEAD, GET, POST, PATCH, DELETE.

**QUESTION 73** What is a benefit of deploying an on-premises infrastructure versus a cloud infrastructure deployment?

A. faster deployment times because additional infrastructure does not need to be purchased.  
B. lower latency between systems that are physically located near each other.  
C. less power and cooling resources needed to run infrastructure on-premises.  
D. ability to quickly increase compute power without the need to install additional hardware.

**Answer:** B  
**Explanation:** The difference between on-premise and cloud is essentially where this hardware and software resides. On-premise means that a company keeps all of this IT environment onsite either managed by themselves or a third-party. Cloud means that it is housed offsite with someone else responsible for monitoring and maintaining it.

**QUESTION 74** How does Cisco Trustsec enable more access controls for dynamic networking environments and data centers?

A. uses flexible NetFlow.  
B. assigns a VLAN to the endpoint.  
C. classifies traffic based on the contextual identity of the endpoint rather than its IP address.  
D. classifies traffic based on advanced application recognition.

**Answer:** C  
**Explanation:** The Cisco TrustSec solution simplifies the provisioning and management of network access control through the use of software-defined segmentation to classify network traffic and enforce policies for more flexible access controls. Traffic classification is based on endpoint identity, not IP address, enabling policy change without network redesign.  
**Reference:** [https://www.cisco.com/c/dam/en/us/td/docs/solutions/CVD/Apr2016/User-to-DC\\_Access\\_Control\\_Using\\_TrustSec\\_Deployment\\_April2016.pdf](https://www.cisco.com/c/dam/en/us/td/docs/solutions/CVD/Apr2016/User-to-DC_Access_Control_Using_TrustSec_Deployment_April2016.pdf)

**QUESTION 75** Which method does the enable secret password option use to encrypt device passwords?

A. AES.  
B. CHAP.  
C. PAP.  
D. MD5

**Answer:** D  
**Resources From:** 1. 2020 Latest Braindump2go 350-401 Exam Dumps (PDF & VCE) Free Share: <https://www.braindump2go.com/350-401.html> 2. 2020 Latest Braindump2go 350-401 PDF and 350-401 VCE Dumps Free Share: <https://drive.google.com/drive/folders/1EIsykNTrKvqjDV9JMySv052qbrCpe8V?usp=sharing> 3. 2020 Free Braindump2go 350-401 PDF Download: [https://www.braindump2go.com/free-online-pdf/350-401-Dumps\(Q96-Q107\).pdf](https://www.braindump2go.com/free-online-pdf/350-401-Dumps(Q96-Q107).pdf)  
[https://www.braindump2go.com/free-online-pdf/350-401-PDF\(Q84-Q95\).pdf](https://www.braindump2go.com/free-online-pdf/350-401-PDF(Q84-Q95).pdf)  
[https://www.braindump2go.com/free-online-pdf/350-401-PDF-Dumps\(Q61-Q71\).pdf](https://www.braindump2go.com/free-online-pdf/350-401-PDF-Dumps(Q61-Q71).pdf)

[https://www.braindump2go.com/free-online-pdf/350-401-VCE\(Q72-Q83\).pdf](https://www.braindump2go.com/free-online-pdf/350-401-VCE(Q72-Q83).pdf)

[https://www.braindump2go.com/free-online-pdf/350-401-VCE-Dumps\(Q108-Q118\).pdf](https://www.braindump2go.com/free-online-pdf/350-401-VCE-Dumps(Q108-Q118).pdf) Free Resources from Braindump2go, We  
Devoted to Helping You 100% Pass All Exams!