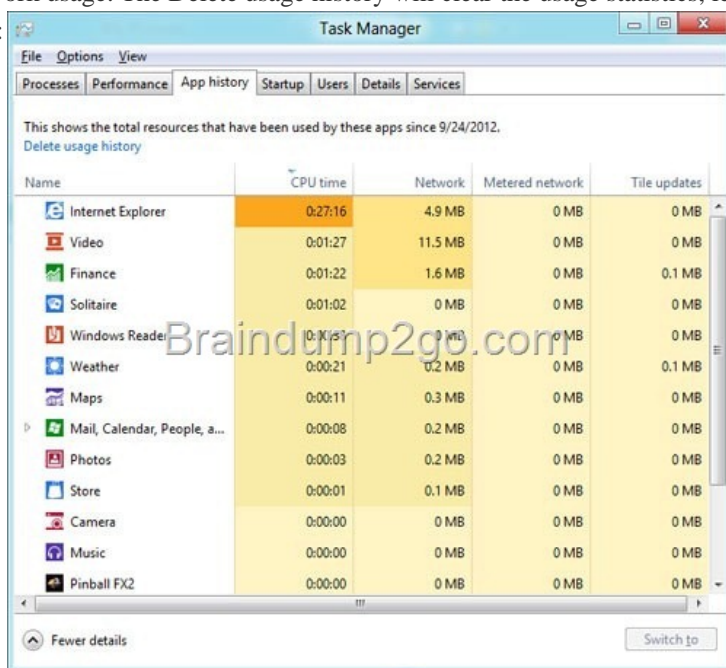


2014 Latest Microsoft 70-687 Exam Dump Free Download!(101-110)

QUESTION 101 You use many Windows Store apps on a computer that runs Windows 8. You are planning a performance audit on the computer. You need to establish the volume of data upload from each app over a five-day period. Which three actions should you perform? (Each correct answer presents part of the solution. Choose three.) A. On the fifth day, review the upload statistics in Task Manger. B. Configure Task Manager to save usage data to a file. C. Configure Task Manager to record data upload from each Windows Store app. D. On the first day, delete any existing application usage history E. Open Task Manager and add the Uploads column. Answer: ABD Explanation: B, D: App History tab is a great new addition to Windows Task Manager. It maintains a list of application you launch during a session, so that you can easily switch to any previously used application, and view its CPU and Network usage. The Delete usage history will clear the usage statistics, letting you record application usage history from scratch.

Example:



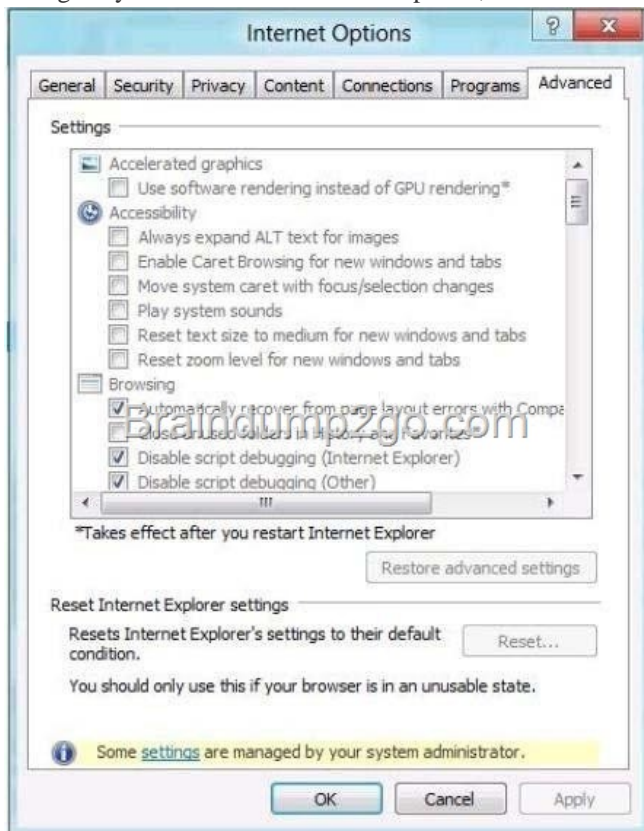
The screenshot shows the Windows Task Manager window with the 'App history' tab selected. The window title is 'Task Manager' and it has a menu bar with 'File', 'Options', and 'View'. Below the menu bar are tabs for 'Processes', 'Performance', 'App history', 'Startup', 'Users', 'Details', and 'Services'. The 'App history' tab is active, displaying a table of application usage statistics. The table has columns for 'Name', 'CPU time', 'Network', 'Metered network', and 'Tile updates'. The data is as follows:

Name	CPU time	Network	Metered network	Tile updates
Internet Explorer	0:27:16	4.9 MB	0 MB	0 MB
Video	0:01:27	11.5 MB	0 MB	0 MB
Finance	0:01:22	1.6 MB	0 MB	0.1 MB
Solitaire	0:01:02	0 MB	0 MB	0 MB
Windows Reader	0:00:21	0 MB	0 MB	0 MB
Weather	0:00:21	0.2 MB	0 MB	0.1 MB
Maps	0:00:11	0.3 MB	0 MB	0 MB
Mail, Calendar, People, a...	0:00:08	0.2 MB	0 MB	0 MB
Photos	0:00:03	0.2 MB	0 MB	0 MB
Store	0:00:01	0.1 MB	0 MB	0 MB
Camera	0:00:00	0 MB	0 MB	0 MB
Music	0:00:00	0 MB	0 MB	0 MB
Pinball FX2	0:00:00	0 MB	0 MB	0 MB

Incorrect: C: Use the Network column (not the Uploads column). QUESTION 102 You administer windows 8 Pro computers in your company network A user named User1 encrypts a sensitive file named file.txt by using Encrypting file systems (EFS) A user named User2 must be able to read file.txt. You need to configure unencrypted read access to file.txt for User2 What should you do? A. Configure Advanced Attributes B. Configure Effective Access C. Configure Advanced Security Settings D. Share the folder that contains file.txt. Answer: A QUESTION 103 You plan to purchase new windows 8.1 tablets for you company network. You need to ensure that tablet users are able to use the windows 8.1 Snap feature. Which hardware specifications should you meet in choosing tablets? A. monitor and video adapter that support a minimum screen resolution of 1366 x 768 B. monitor that supports at least three simultaneous touches C. monitor that supports at least five simultaneous touches D. monitor and video adapter that support a minimum screen resolution of 1024 x 768 Answer: D Explanation:

<http://windows.microsoft.com/en-us/windows-8/system-requirements> QUESTION 104 You have a computer that runs Windows 8. You install a custom application by using an .msi file that is located in your Documents library. The computer begins to experience performance issues. You decide to reinstall the custom application. When you run the .msi file, you receive an error message about a corrupted file. You need to ensure that you can reinstall the application What should you do? A. Run the replace command, specify the application's .msi file as the source, and then specify the application's original installation directory as the destination. B. Use file History to revert the application's .msi file to a previous version. C. Run the msixec /f command and specify the application's .msi file. D. Run the reset /f command and specify the application's .msi file. Answer: B QUESTION 105 You administer 100 windows 8 laptops, all of which have PowerShell Remoting enabled. You run the following command on a computer named Computer1: Invoke-Command -filepath \Computer2ShareMyScript.ps1 - computername computer2 MyScript1.ps1 fails to execute. You verify that you are able to access it from the network You need to be able to execute MyScript1.ps1 on computer1. What should you do? A. Copy MyScript1.ps1 to a local drive on computer1 and run the Invoke-command cmdlet on computer1 B. Run the Enter-PSSession cmdlet on Computer1. C. Run the Set-ExecutionPolicy cmdlet on Computer2 D. Run the

Set-ExecutionPolicy cmdlet on Computer1 Answer: D QUESTION 106 Your computer runs Windows 8 and is connected to an Active Directory Domain Services (AD DS) domain. You create a folder and share the folder with everyone in your organization. You need to modify the NTFS permissions of the folder to meet the following criteria: - Users from the Supervisors AD security group must be able to open files, but not modify them. - Users from the Marketing AD security group must be able to create, modify, and delete files. - Users from both groups must not be able to delete the folder. Which permissions should you set? A. Assign the Supervisors group the Read and Write permissions. Assign the Marketing group the Modify permission and the Delete Subfolders and Files special permission. B. Assign the Supervisors group the Read and Write permissions. Assign the Marketing group the Full Control permission. C. Assign the supervisors group the Read permission. Assign the Marketing group the Read and Write permissions and the Delete Subfolders and Files special permission. D. Assign the Supervisors group the Read permission. Assign the Marketing group the Read and Write permissions and the Delete special permission. Answer: C QUESTION 107 You use a computer that has Windows 8 Pro installed. Your personal files are stored in a storage pool that is distributed across multiple USB drives. You need to configure a daily backup solution that meets the following requirements: - Automatically backs up all of your personal files that are located in the storage pool. - Automatically backs up operating system files. - Ensures that you can restore any file. What should you do? A. Create a recovery drive. B. Turn on File History. C. Configure Windows 7 File Recovery. D. Configure system protection. Answer: D QUESTION 108 A computer that runs Windows 8 is configured with a 2 TB storage pool. The storage pool currently shows 1 TB of available space. You try to save 100 MB of files to the storage drive. An error message states that the drive is full. You need to make an additional 1 TB of space available in the storage pool. What should you do? A. Connect a 1 TB drive to the computer and add the new drive to the storage pool. B. Connect a 1 TB drive to the computer and assign a drive letter to the new drive. C. Set the resiliency type of the storage pool to Parity. D. Set the logical size of the storage pool to 2 TB. Answer: A QUESTION 109 You are troubleshooting a computer that runs Windows 8. The computer is not joined to a domain. You are unable to change any of the advanced Internet options, which are shown in the Advanced Internet Options exhibit. (Click the Exhibit button.)



You need to ensure that you can change the advanced Internet options. Which tool should you use? A. Credential Manager B. Authorization Manager C. Group Policy Object Editor D. Ease of Access Center Answer: C QUESTION 110 You use a Windows 8 computer. You pin some of your favorite websites to the Start screen. When you click a pinned website, the site opens in Internet Explorer. You need to ensure that the pinned websites open in Internet Explorer for the desktop. What should you do? A. In Internet Options, set Choose how you open links to Always in Internet Explorer on the desktop. B. In Internet Options, select

Open Internet Explorer tiles on the desktop. C. In Internet Options, select Enable flip ahead. D. In Internet Options, set Choose how you open links to Let Internet Explorer decide. Answer: B Passing Microsoft 70-687 Exam successfully in a short time! Just using Braindump2go's Latest Microsoft 70-687 Dump: <http://www.braindump2go.com/70-687.html>