

2014 Free Microsoft 70-687 Exam Study Guide(181-190)

QUESTION 181 A company has a Microsoft Software Assurance with Volume Licensing agreement. All client computers run Windows 8.1. An employee updates a device driver on his computer and then restarts the computer. Windows does not start successfully. You establish that the updated driver is the cause of the problem. You need to prevent the updated driver from running on startup, without impacting other drivers or personal data. What should you do? A. Use the Windows 8.1 PC Reset feature. B. Reset the computer to the manufacturer's system image. C. Start the computer with the Diagnostic and Recovery Toolset and configure the driver options. D. Use the File History feature. Answer: C

QUESTION 182 You administer an installation of Windows 8.1 that runs as a virtual machine. The virtual machine has one 60-GB fixed size virtual hard disk with a single partition assigned as Volume C. The virtual machine runs out of disk space. You increase the size of the virtual hard disk file to 200 GB to support an application demand for increased storage on Volume C. You discover that Volume C is still 60 GB in File Explorer of the virtual machine. You need to ensure that Volume C is configured to use 200 GB. What should you do? A. Configure the Virtual Disk type from fixed size to dynamic disk. B. From Disk Management of the virtual hard disk, run the Extend the volume action task. C. From Disk Management of the host computer, extend the Volume C. D. Create a new storage space of Simple (no resiliency) type. Answer: B

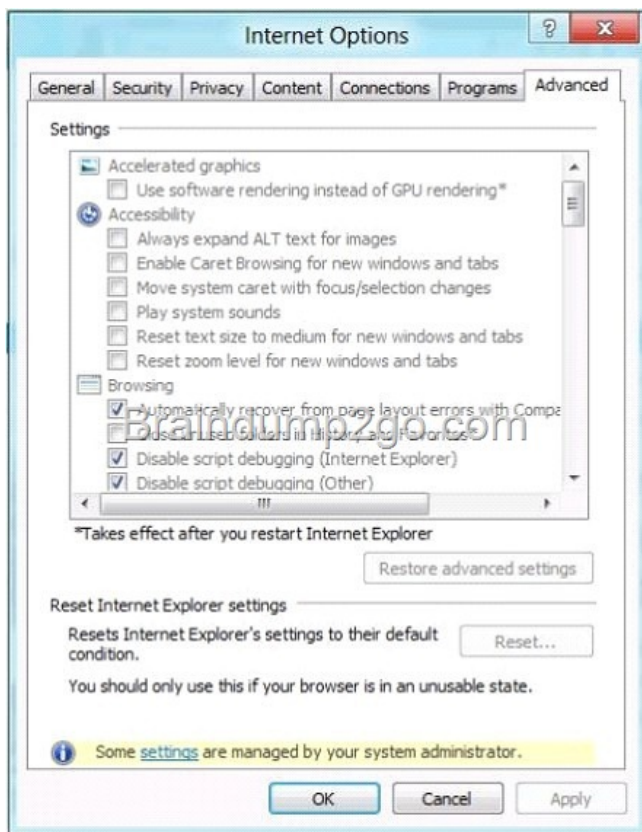
QUESTION 183 You administer client computers in your company network. The network includes an Active Directory Domain Services (AD DS) domain. Employees in the human resources (HR) department are getting new Windows 8.1 Enterprise computers. The HR department uses a line of business (LOB) Windows Store app named Timesheet that is not available in Windows Store. You need to ensure that all employees in the HR department can use Timesheet on their new computers. What should you do? A. Set the Allow all trusted applications to install group policy to Enabled. B. Set the Turn off the Store application group policy to Enabled. C. Install and run the Microsoft Deployment Toolkit. D. Install and run the Windows App Certification Kit. Answer: A

Explanation: Currently, the Consumer Preview and Windows Server 8 Beta are classified as "enterprise sideloading enabled." This means that when a PC is domain joined, it can be configured to accept non-Windows Store apps from their IT admin. Moving forward, this functionality to install non-Windows Store Metro style apps will be available for Windows 8 Enterprise Edition and Windows 8 Server editions. On an enterprise sideloading enabled edition, the IT admins needs to verify: The PC is domain joined. The group policy is set to "Allow all trusted apps to install". The app is signed by a CA that is trusted on the target PCs

Note: While the Windows Store will be a great way to deploy apps to business customers, there are apps that IT admins will want to distribute directly to the end-users. This option makes sense for custom and proprietary line-of-business (LOB) apps, or enterprise software purchased directly from an ISV.

QUESTION 184 You administer Windows 8.1 Enterprise client computers in your company network. You need to prevent users from installing applications published by a specific publisher in Windows Store. Which type of AppLocker rule should you create? A. Packaged app B. Windows Installer C. Executable D. Script Answer: A

QUESTION 185 You are troubleshooting a Windows 8.1 computer. The computer is not joined to a domain. You are unable to change any of the advanced Internet options, which are shown in the Advanced Internet Options exhibit. (Click the Exhibit button.)



You need to ensure that you can change the advanced Internet options. What should you do? A. Use the Group Policy Object Editor. B. Use the Internet Explorer Administration Kit (IEAK). C. Run Internet Explorer and use the Settings charm to change options. D. Run the iexplore -k command. Answer: A QUESTION 186 Drag and Drop Question A company has client computers that run Windows 7. Each employee has two client computers: one at work and one at home. The company plans to deploy Windows 8.1 to all client computers. You are planning a deployment strategy. You have the following requirements: - Minimize deployment time. - Ensure that the PC Reset and PC Refresh features can be utilized on all work computers. You need to plan a deployment strategy that meets the requirements. What should you do? (To answer, drag the appropriate installation method or methods to the correct location or locations in the answer area. Methods may be used once, more than once, or not at all. You may need to drag the split bar between panes or scroll to view content.)

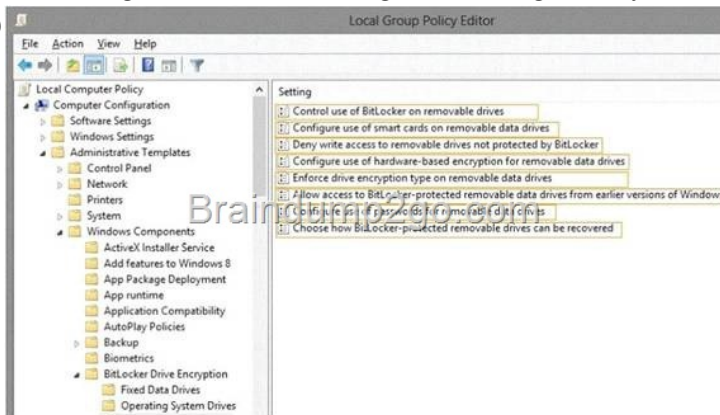
Computer	Method
Work computer	Installation Method
Home computer	Installation Method

Answer:

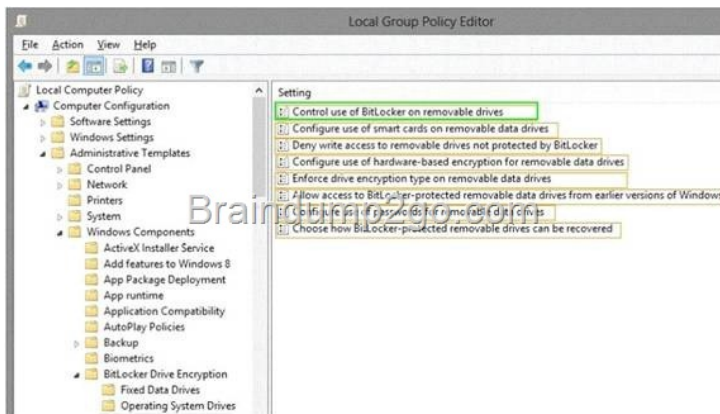
Computer	Method
Work computer	Install Windows 8.1 directly on the client computer.
Home computer	Start the client computer from a USB flash drive on which you have installed Windows To Go.

QUESTION 188 A company has an Active Directory Domain Services (AD DS) domain. All company employees work on their personally owned computers, which are not members of the domain. The computers are running Windows XP Home, Windows Vista Business, Windows 7 Home Premium, or Windows 8.1. The company is a volume license subscriber. The company plans to deploy Group Policies to all computers. You need to ensure that every employee's computer is subject to the Group Policies. What

should you do first? A. Join all the computers to the same homegroup. B. Start each computer from a USB flash drive on which you have installed Windows To Go. C. Start each computer from a USB flash drive on which you have installed BitLocker To Go. D. Join all the computers to the domain. Answer: B QUESTION 189 A company has Windows 8.1 client computers. The company uses Windows BitLocker Drive Encryption and BitLocker Network Unlock on all client computers. Your need to collect information about BitLocker Network Unlock status. Which command should you run? A. Run the BitLockerWizard command. B. Run the bitsadmin command. C. Run the manage-bde command. D. Run the BdeHdCfg command. Answer: C QUESTION 190 Hotspot Question You administer Windows 8.1 computers in your company network. The security policies of the company require that USB storage devices are allowed only if they are protected with Bitlocker To Go. You need to prevent users from removing Bitlocker encryption from the USB storage devices. Which configuration setting should you modify? (To answer, select the appropriate setting in the answer area.)



Answer:



Download Free Microsoft 70-687 Exam Questions and Answers from Braindump2go: <http://www.braindump2go.com/70-687.html>